

Provincial Checkup

Canadian Woodlands Forum Spring Meeting
April 9, 2025

Sean Greene, RPF, PEng

1 NL Forest Service, Dept. of Fisheries, Forestry and Agriculture

Provincial Overview

- Regional Services Division (Districts)
- Forest Ecosystem Management Division
- Forest Engineering and Industry Services Division

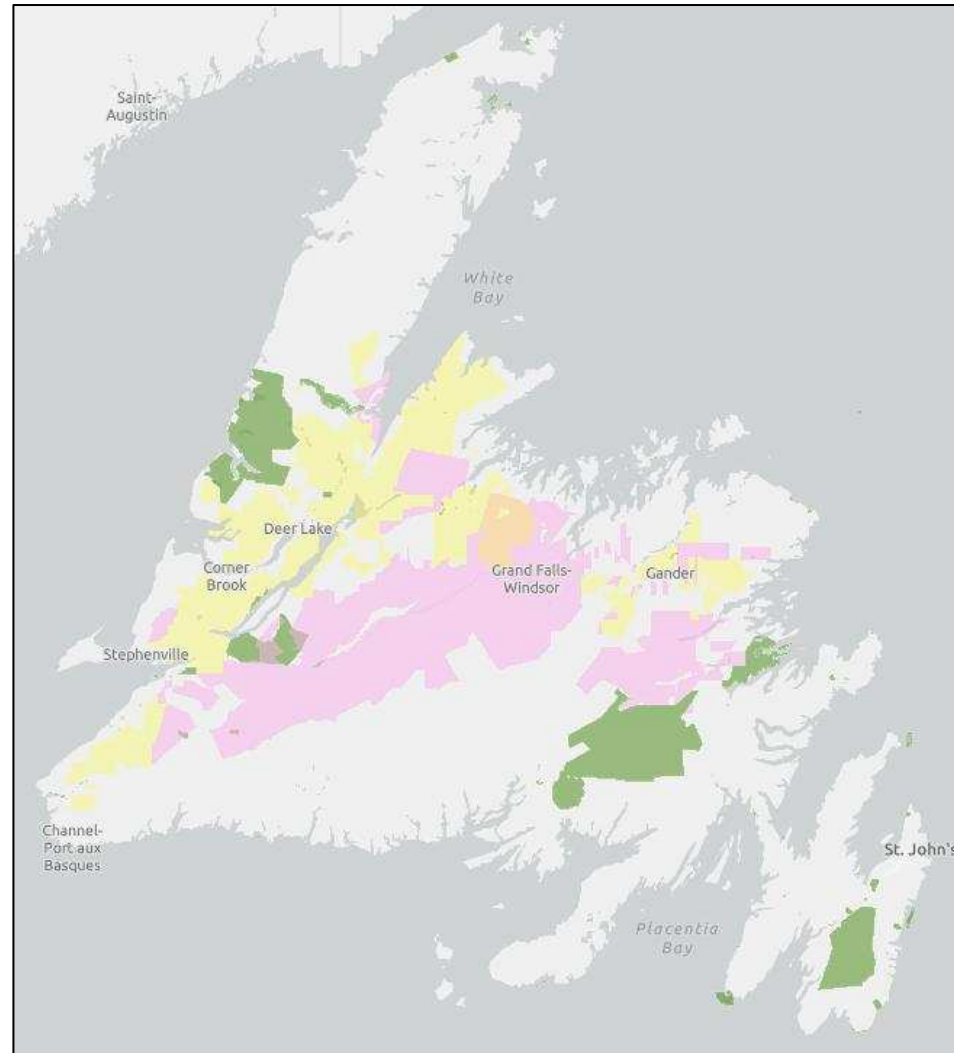
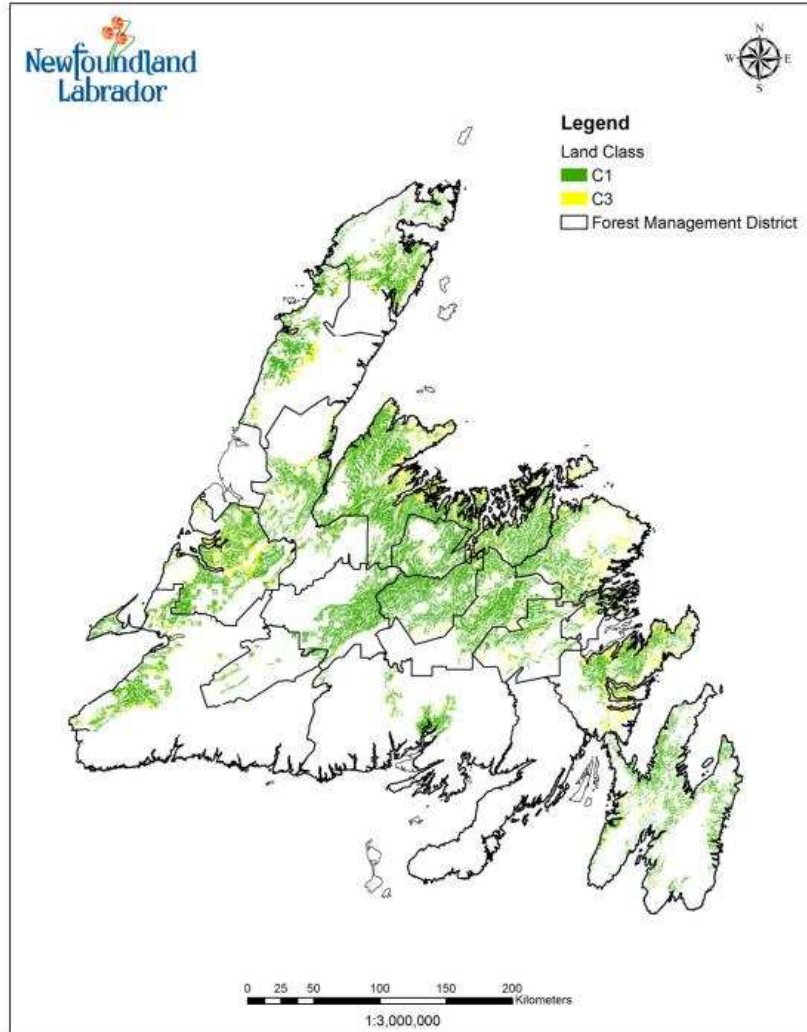
Summary



Provincial Overview – Boreal Forest



Newfoundland Overview



CBPPL Timber Limits



Former Abitibi Limits



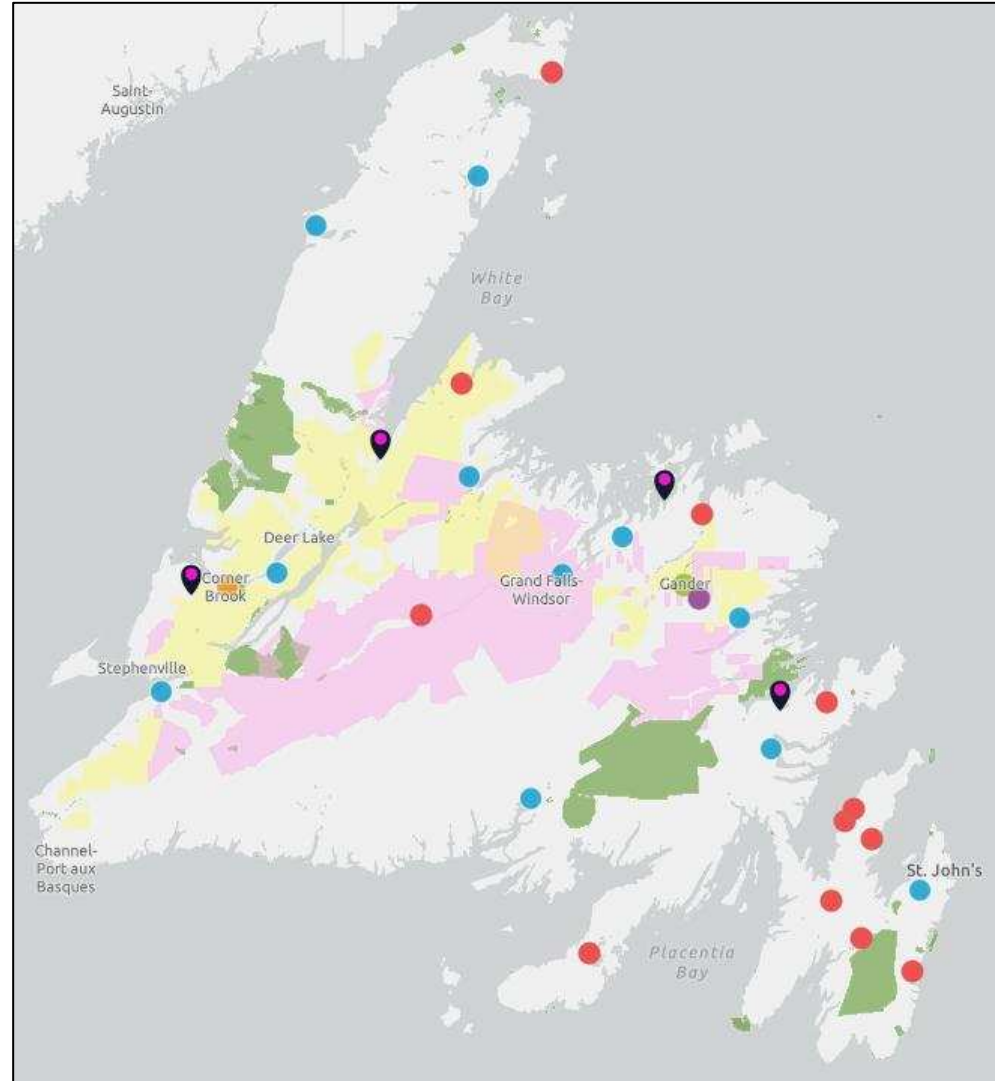
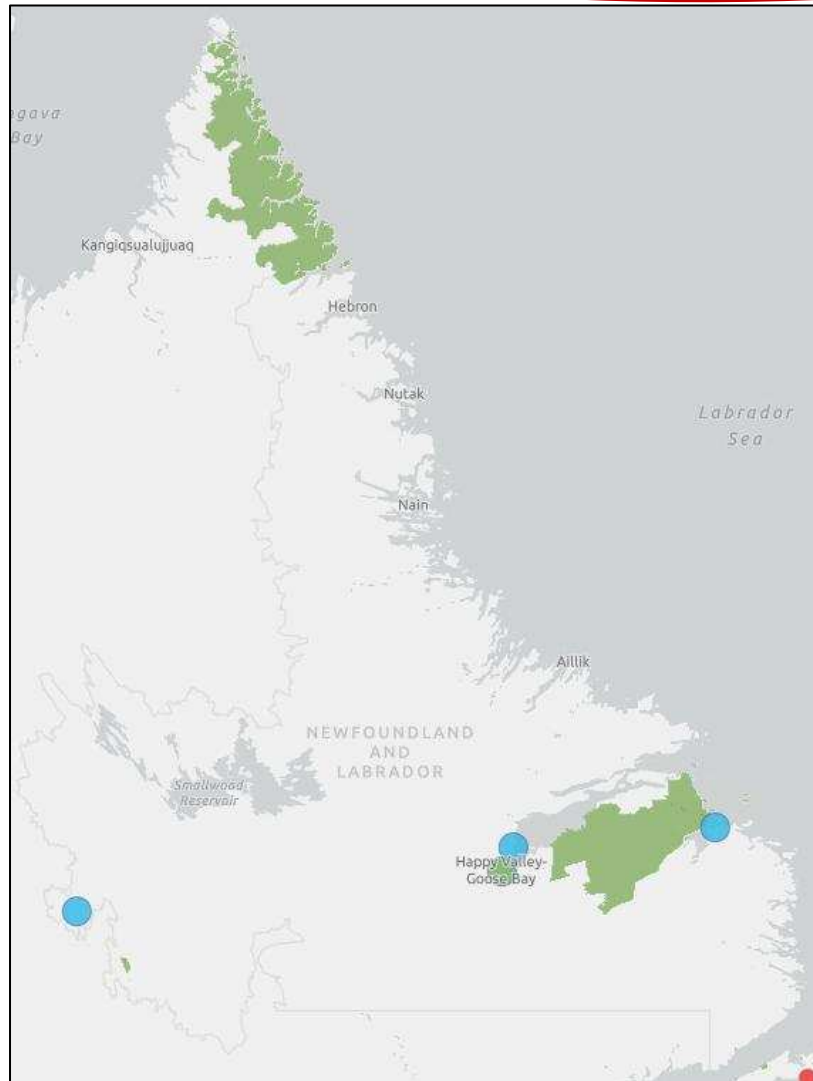
Protected Areas NL



NL Forest Service – 3 Divisions

1. Regional Services
2. Forest Ecosystem Management
3. Forest Engineering & Industry Services

1. Regional Services Division



 Industry

Forestry Branch Offices

-  Depot
-  Forest Management District
-  Regional
-  Fire Protection Centre
-  Headquarters

FMD - Newfoundland



CBPPL Timber Limits

 CBPPL

Former Abitibi Limits

 Former Abitibi Limits

Protected Areas NL



Regional Services – Programs

- Forest Mgmt Program (Ops)
 - Roads
 - Silviculture
 - Harvesting
- Wildlife Control Program
 - Moose-Vehicle Accidents
 - Avian Influenza
 - Nuisance Animal Complaints
- Administration
 - Permits & Licenses
 - Royalty Payments
 - Referrals
 - Wildlife
- Forest Fire Suppression Program
 - Seasonal Staff

Regional Services – Wildlife Control



Regional Services – Wildlife Control



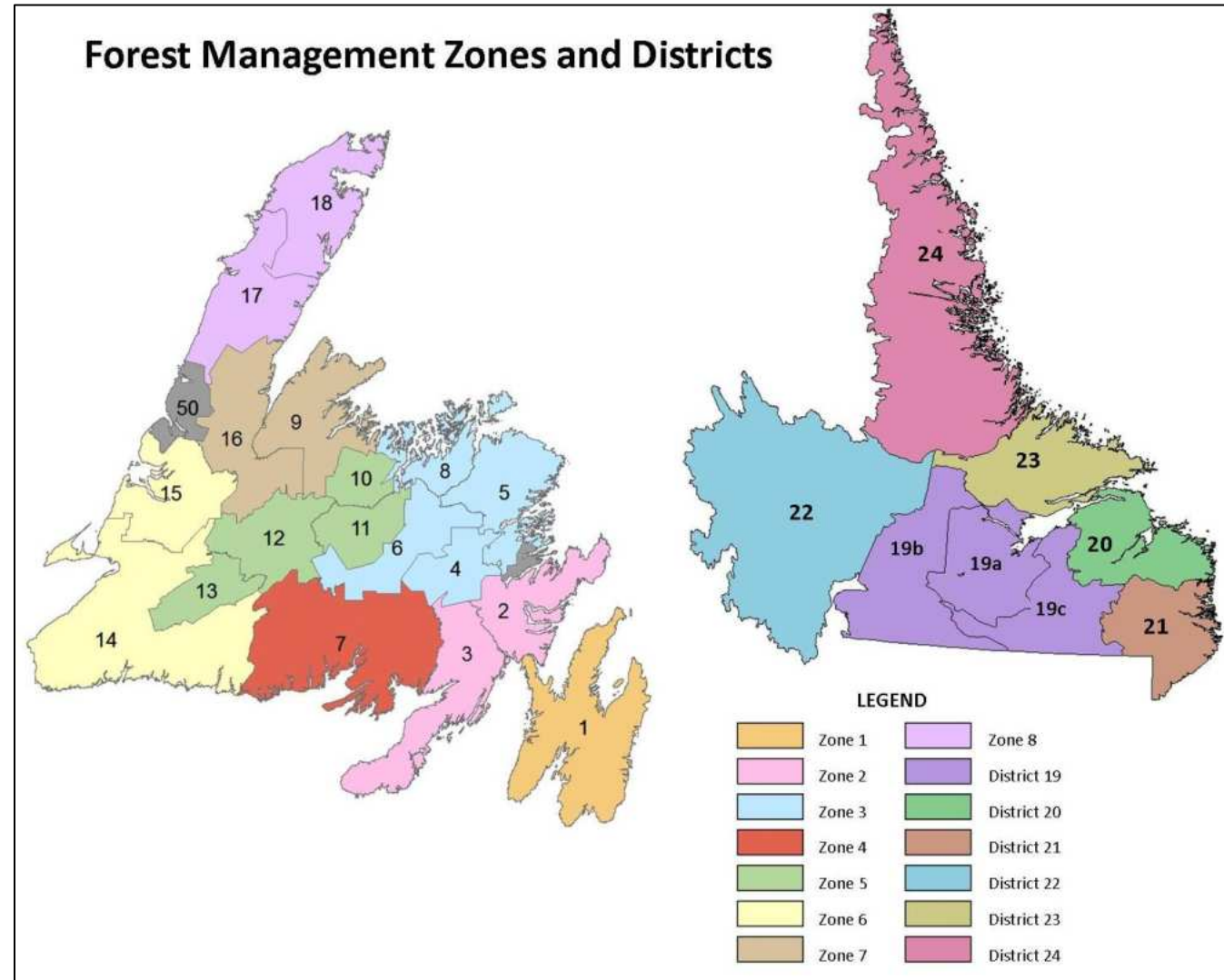
2. Forest Ecosystem Mgmt. Div. (FEM)

Programs:

Strategic Planning

Silviculture

Inventory



FEM – Strategic Planning

FYOP (Wood Supply) -> AAC

- Inventory landcover layers
- Growth and yield curves
- Disturbance updates

AACs

- Newfoundland (Crown) 1.3M m³
- Labrador (Crown) 300,000 m³
- CBPPL 650,000 m³

FEM – Silviculture – Tree Improvement



The mission of AtlanTIC is to promote tree improvement programs such as collaborative breeding, field testing, resource sharing and research in Atlantic Canada and the economic and environmental benefits arising from them.

Members

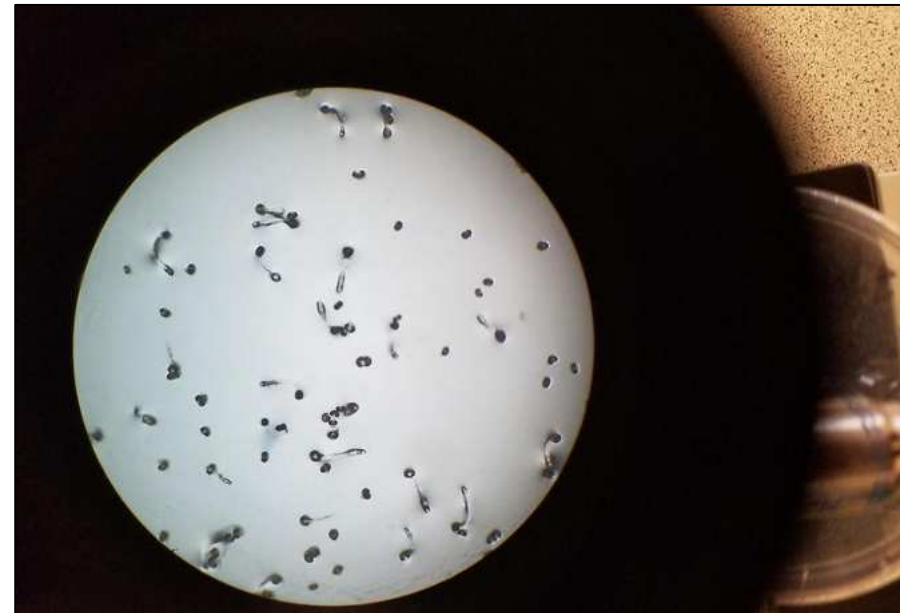
INDUSTRY



GOVERNMENT



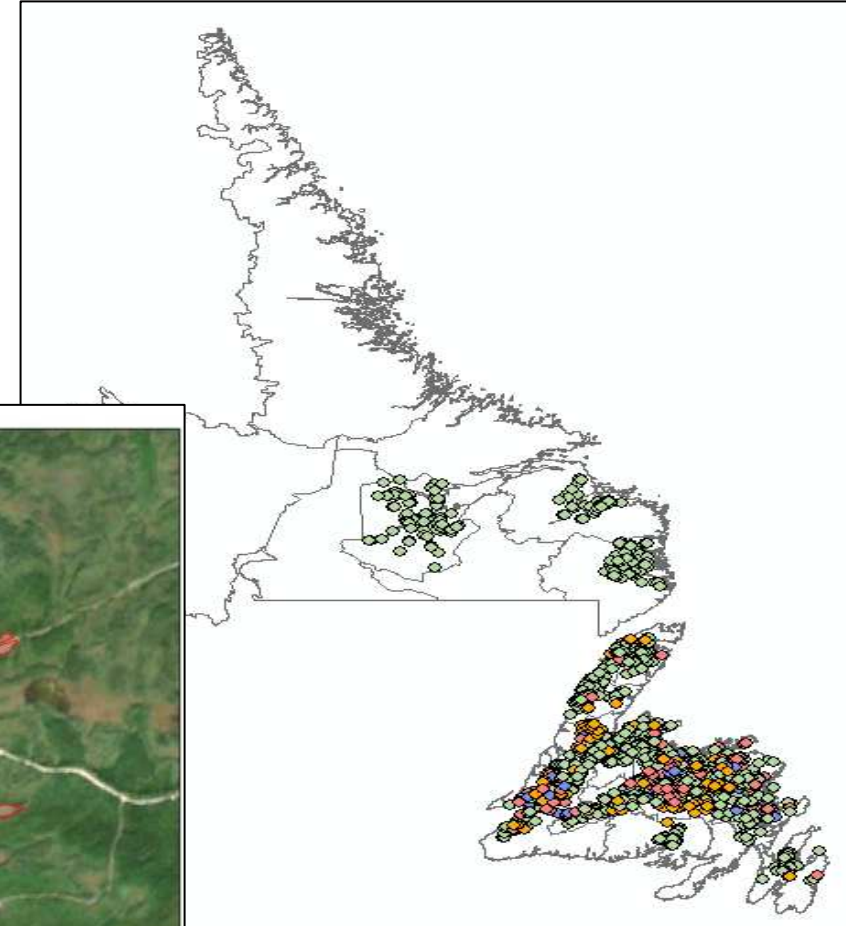
SCIENCE MEMBERS



FEM – Silviculture – Site Preparation



FEM - Inventory



Forest Engineering & Industry Services Division (FEIS)

Programs:

Forest Protection (Wildfire / Insects & Disease)

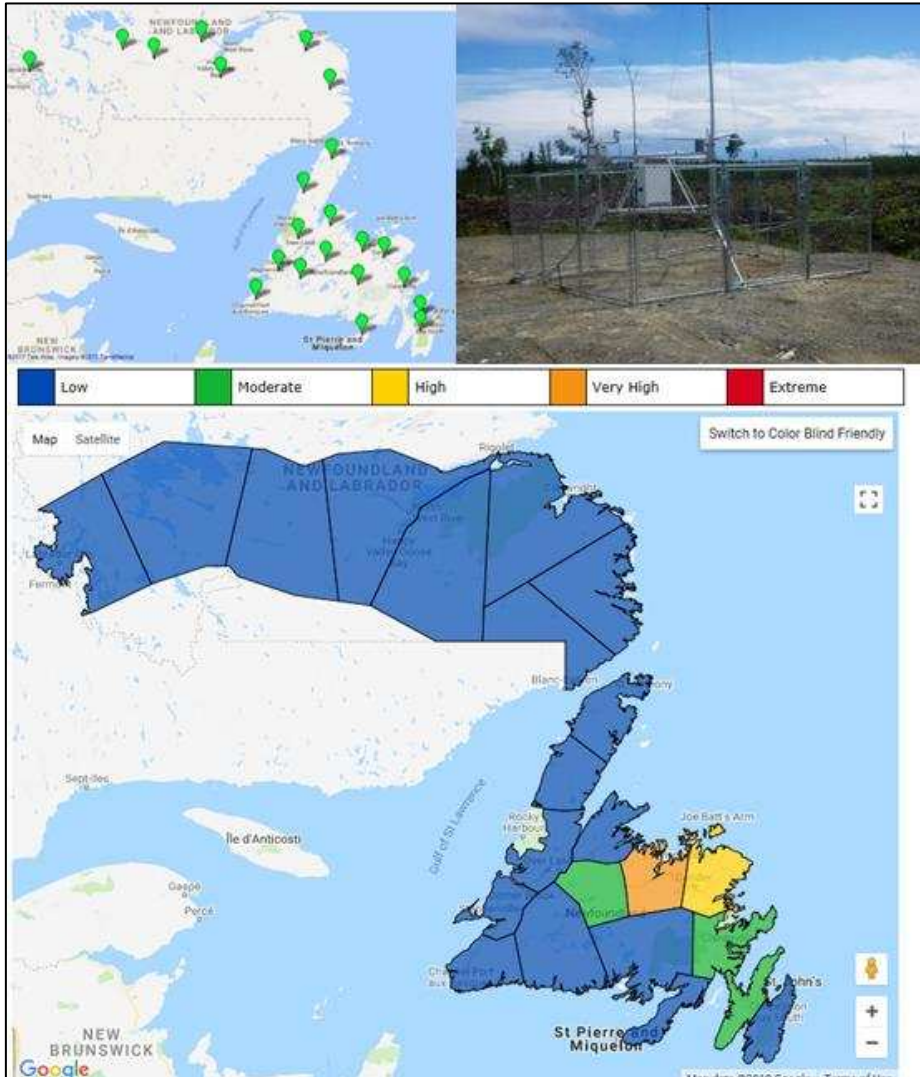
Roads

Industry Services

FEIS – Forest Protection – Wildfire



FEIS – Forest Protection – Wildfire Risk Management



FEIS – Forest Protection – Wildfire Training & Succession Planning



FEIS – Forest Protection – Wildfire Deployments



CANADIAN INTERAGENCY FOREST FIRE CENTRE INC.
CENTRE INTERSERVICES DES FEUX DE FORÊT DU CANADA INC.



FEIS – Forest Protection – Wildfire Recent Developments

WRFI Funding

- 2024 (equipment)
- 2025 heavy aviation

Atlantic Wildfire Centre



FEIS – Forest Protection

– Insect & Disease Control (IDC)



FEIS – Forest Protection – IDC Interventions



FEIS – Forest Protection – IDC Early Intervention Strategy

Government



Academia & Researchers

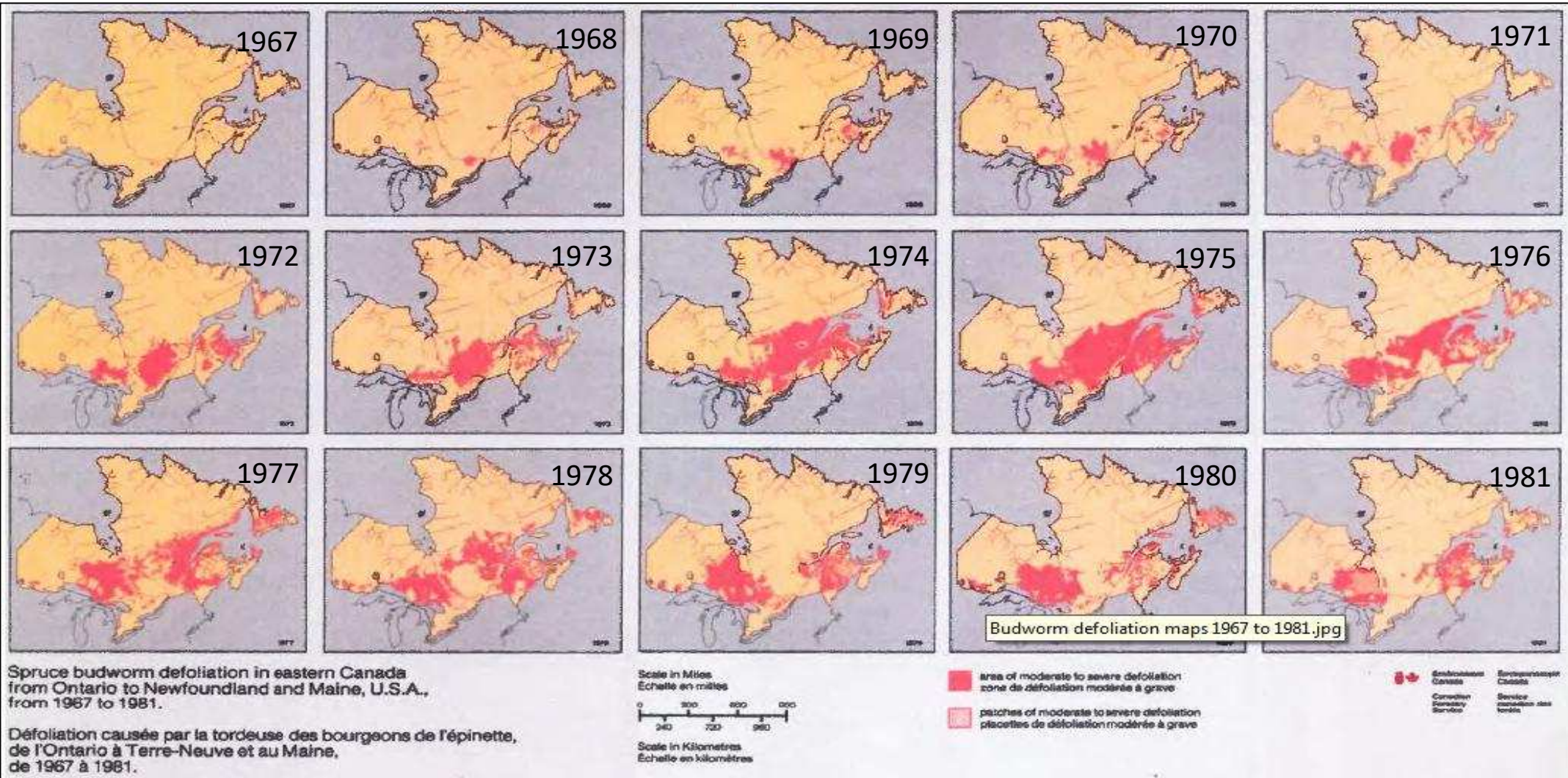


Industry



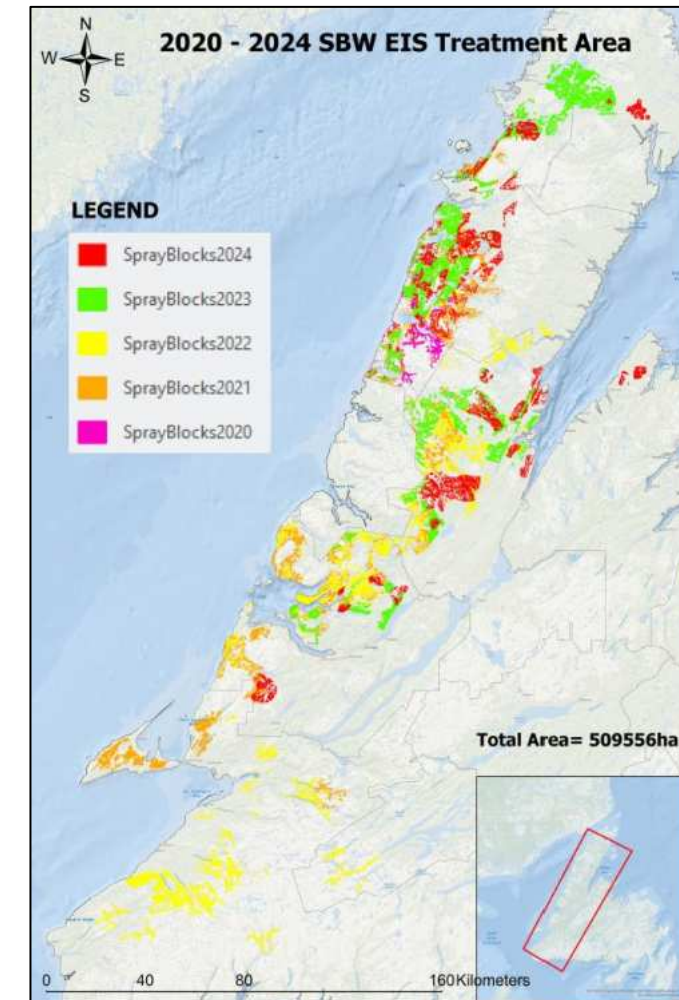
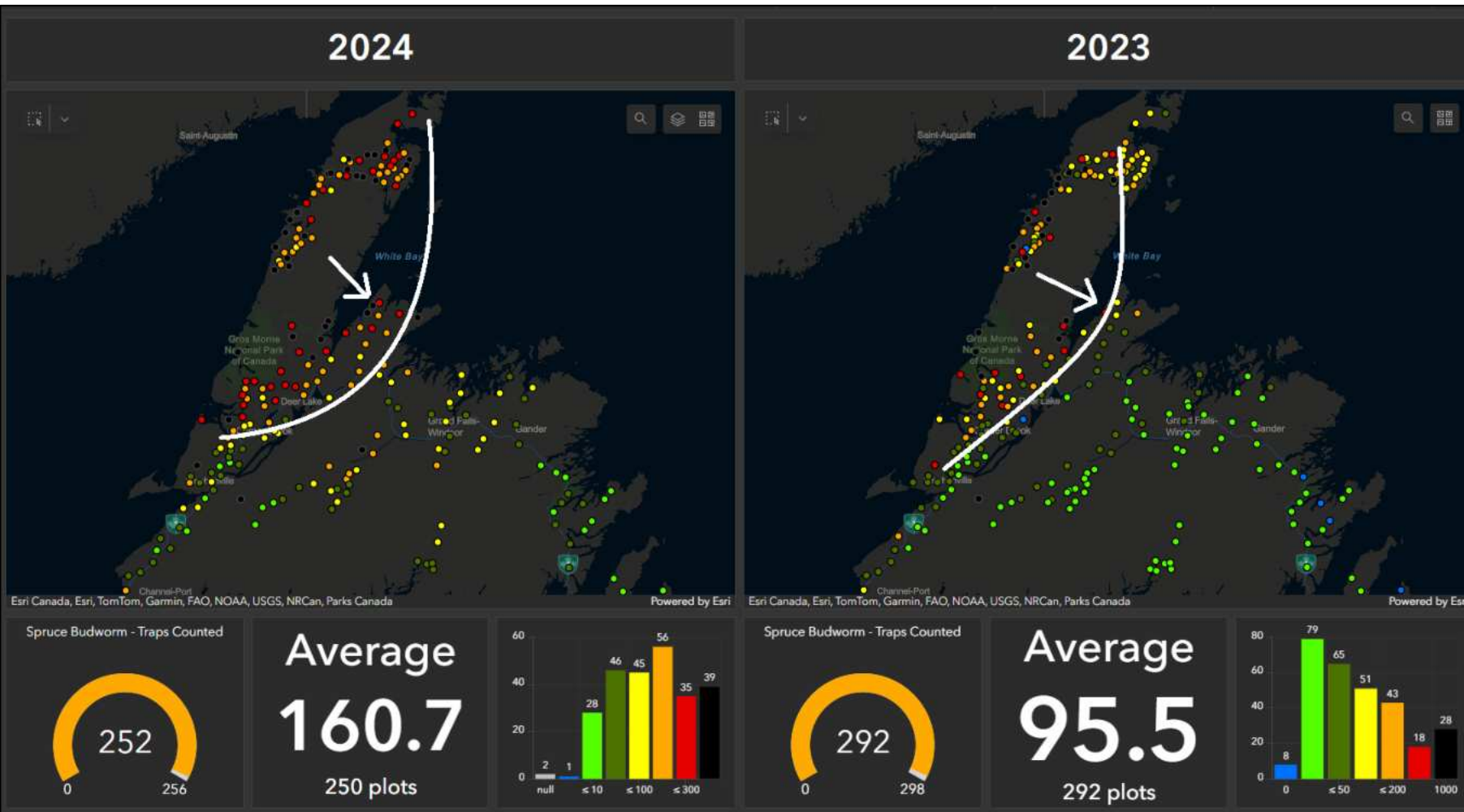
FEIS – Forest Protection – IDC

Spruce Budworm



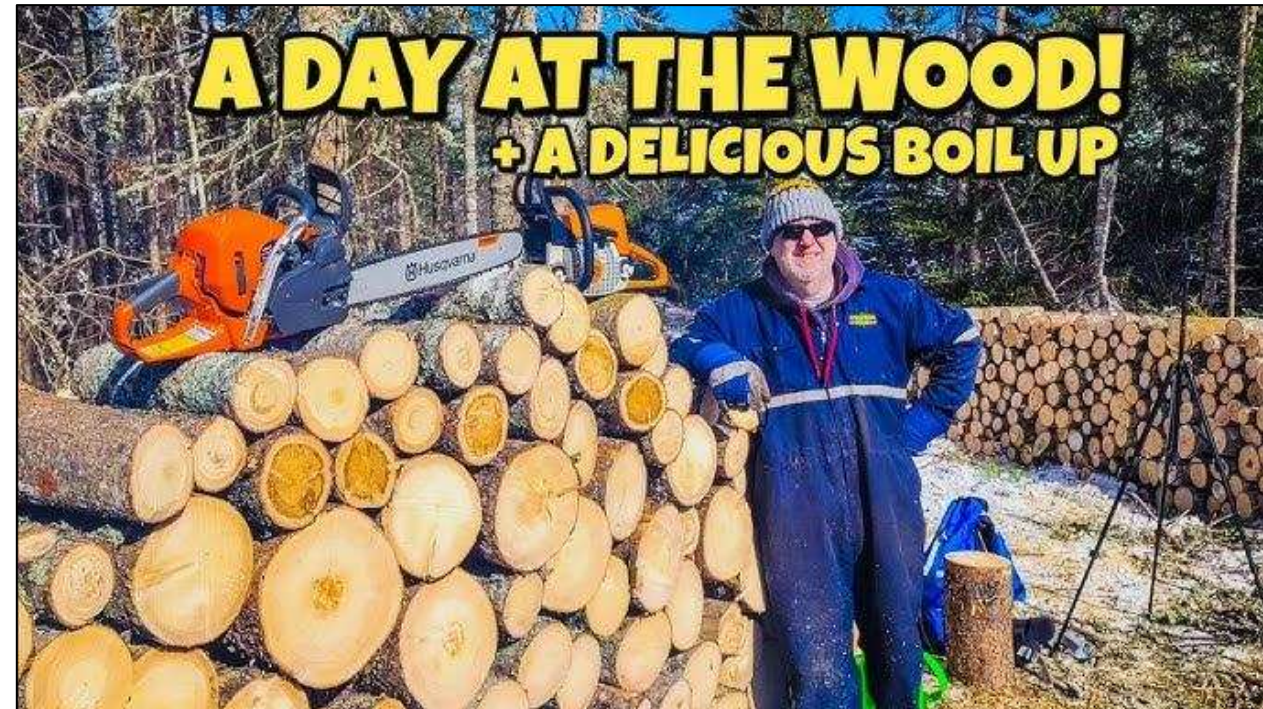
FEIS – Forest Protection – IDC

EIS – Monitoring & Intervention



FEIS – Industry Services

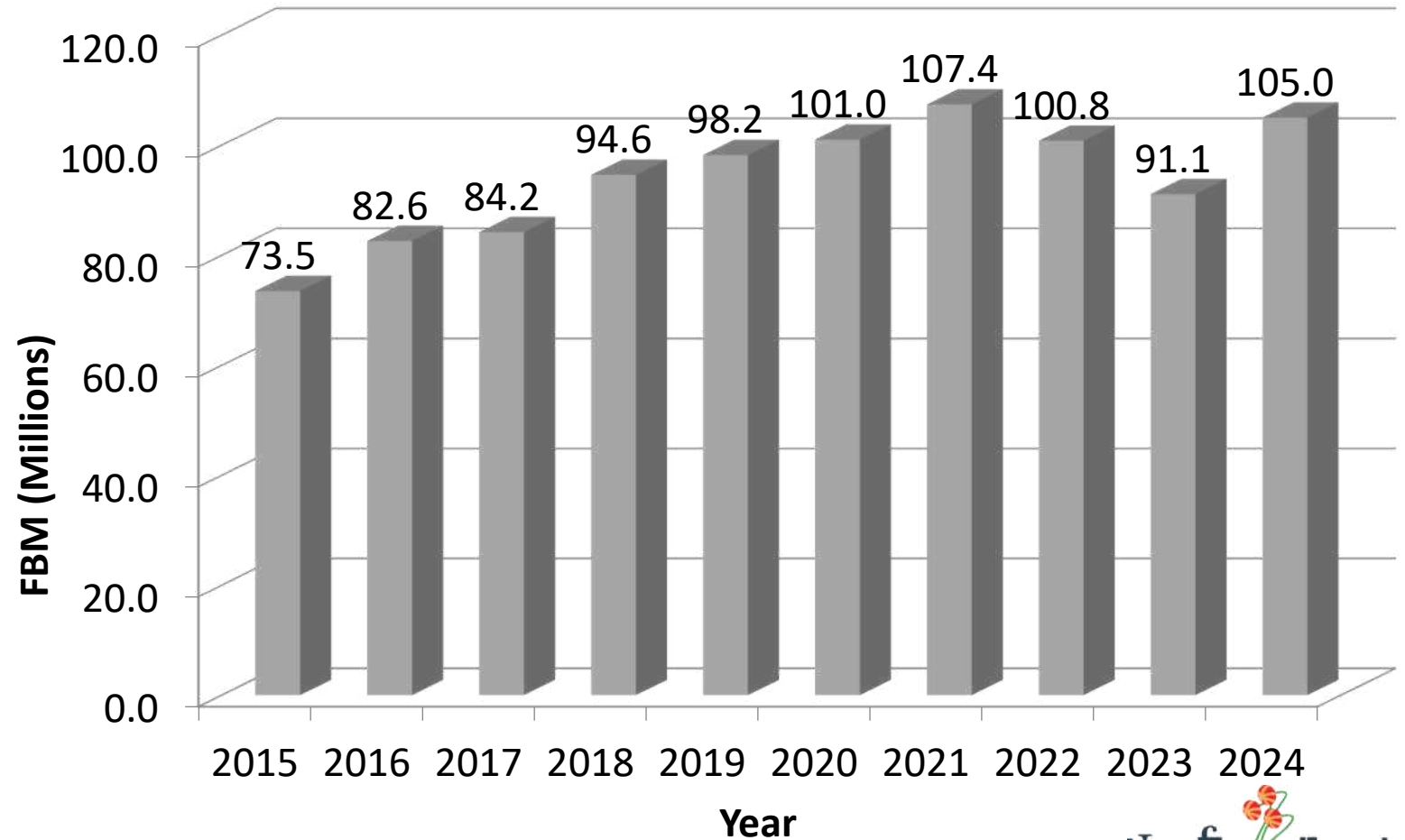
1. Pulp and Paper (newsprint)
2. Sawmilling
 - 3 large integrated mills
 - 4-5 intermediate
 - 400+ small mills (seasonal)
3. Value-Added
 - ~100 companies
4. Wood Energy (Fuel Wood)
 - Firewood (domestic)



FEIS – Industry Services – Pulp & Paper



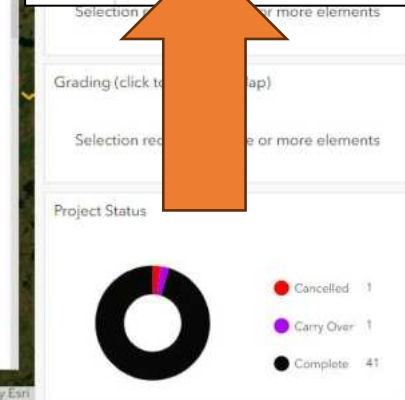
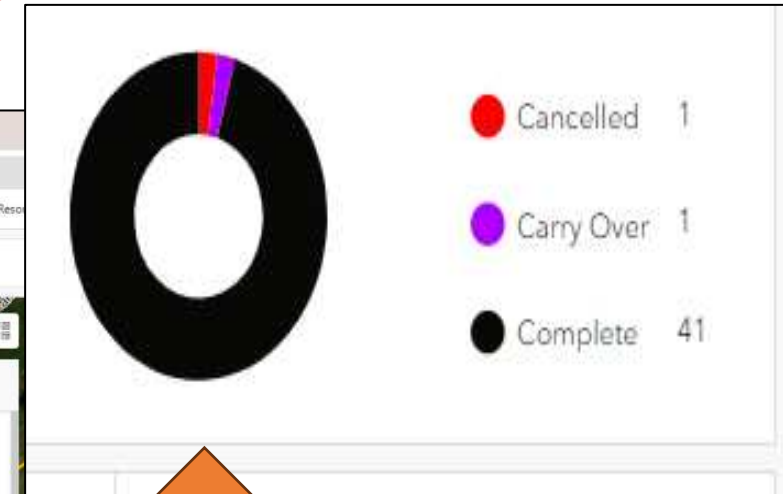
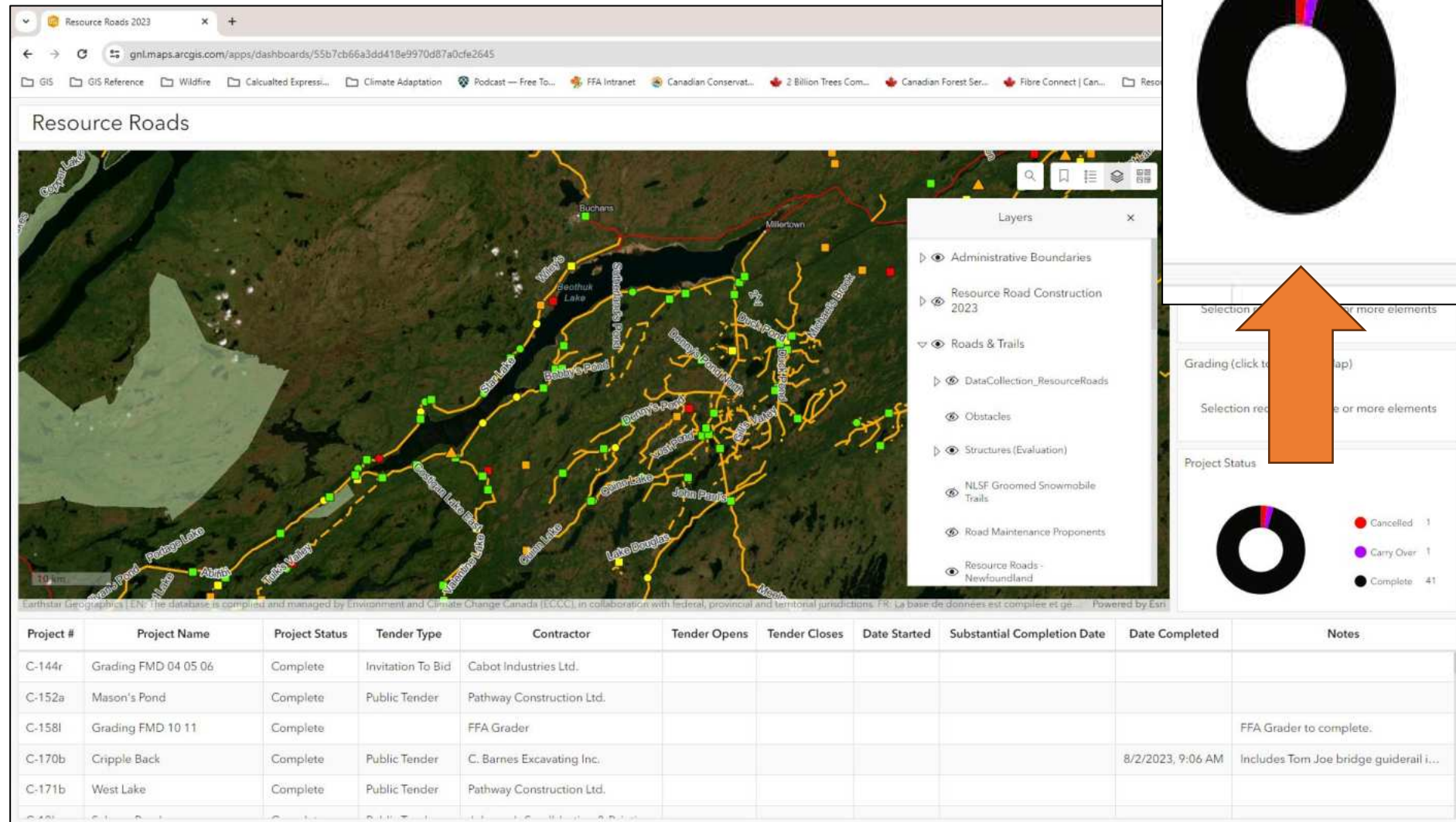
FEIS – Industry Services – Sawmill



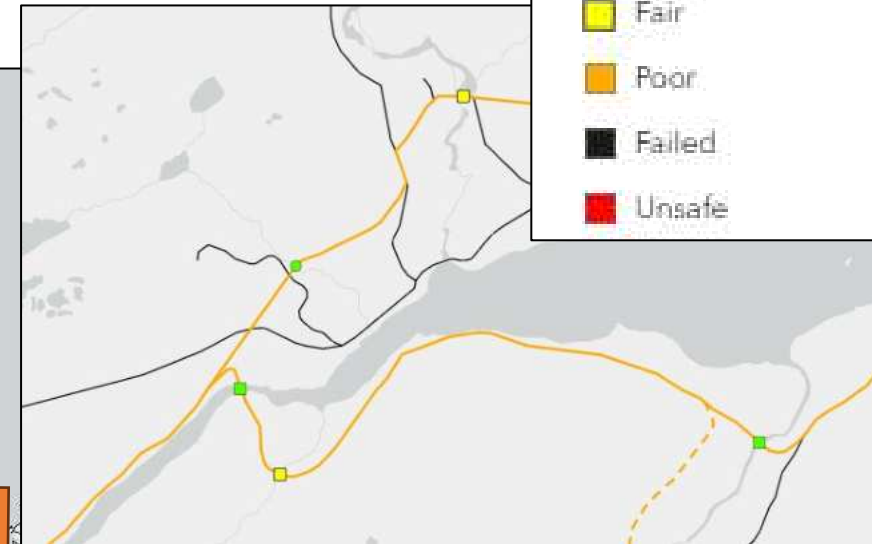
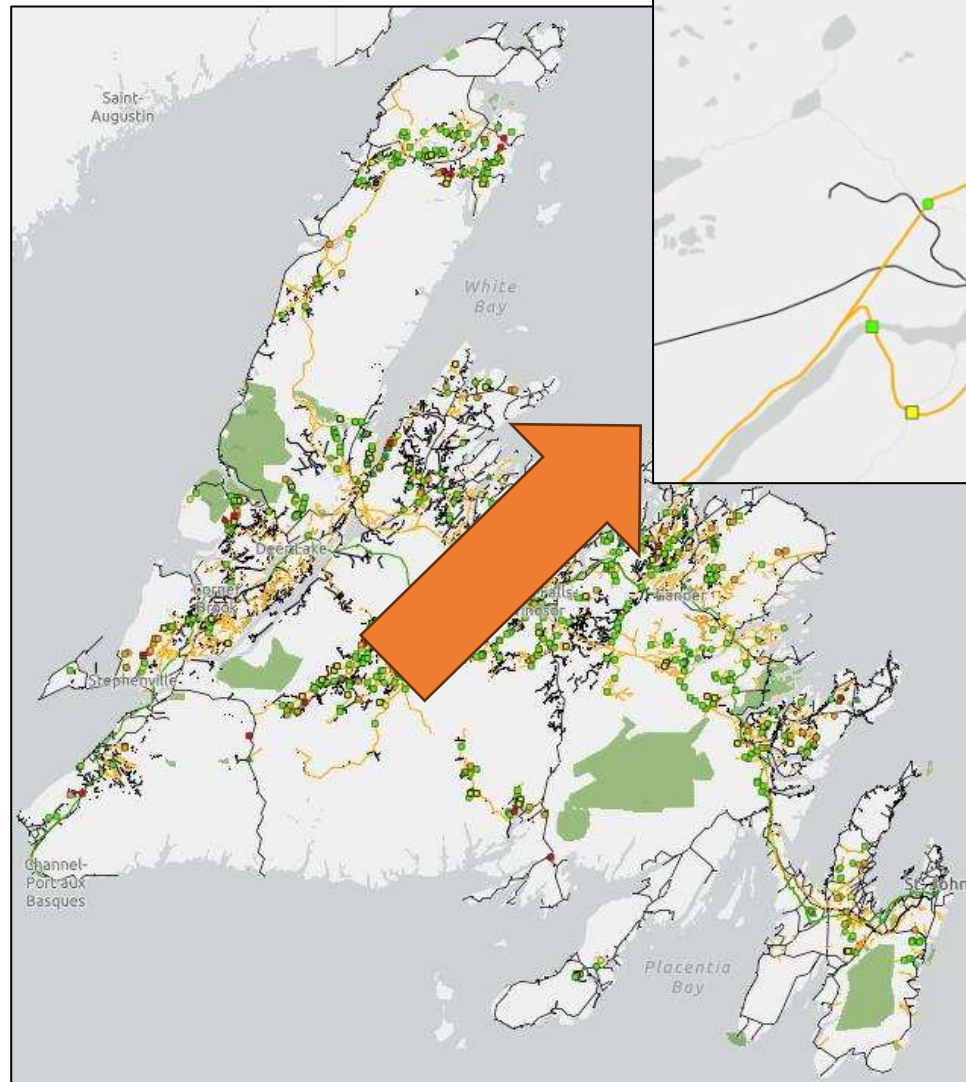
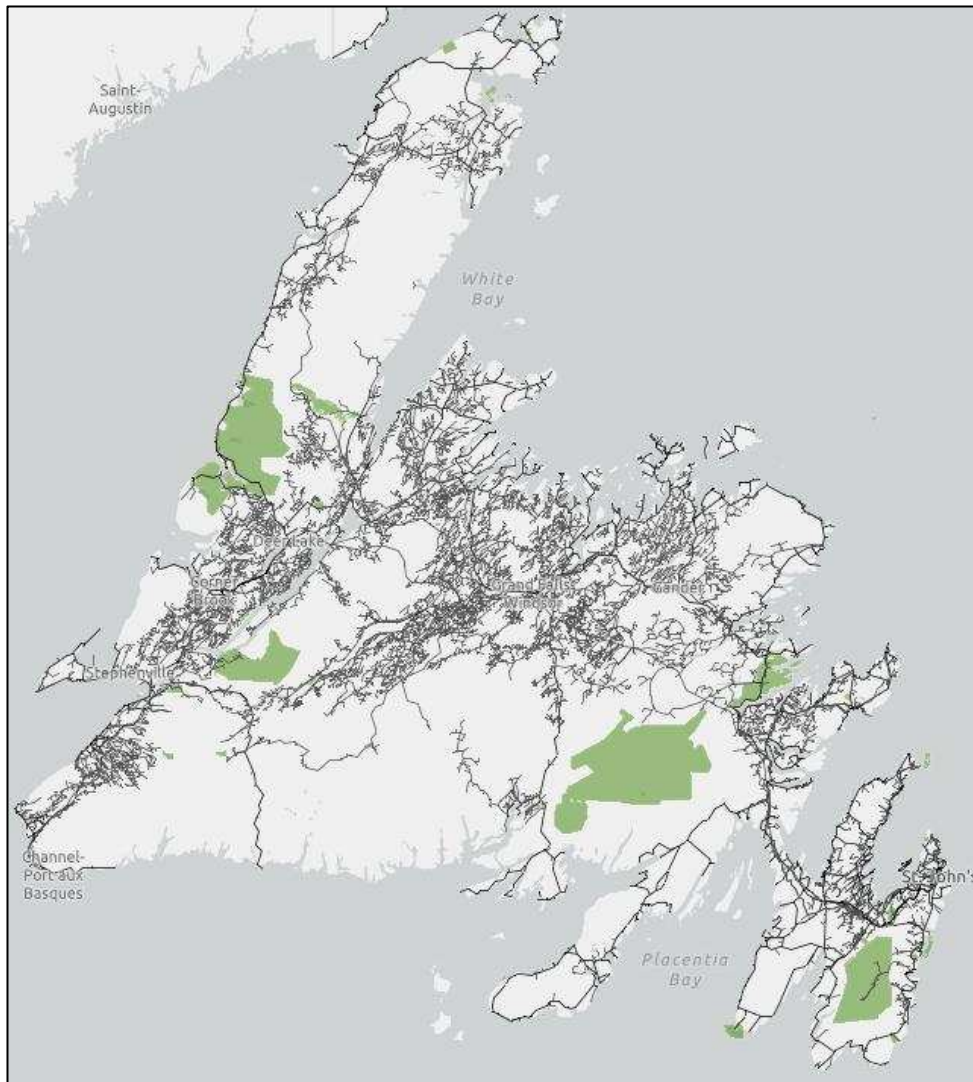
FEIS – Engineering (Resource Roads)



FEIS – Resource Roads ArcGIS Dashboard (Construction)



FEIS – Resource Roads

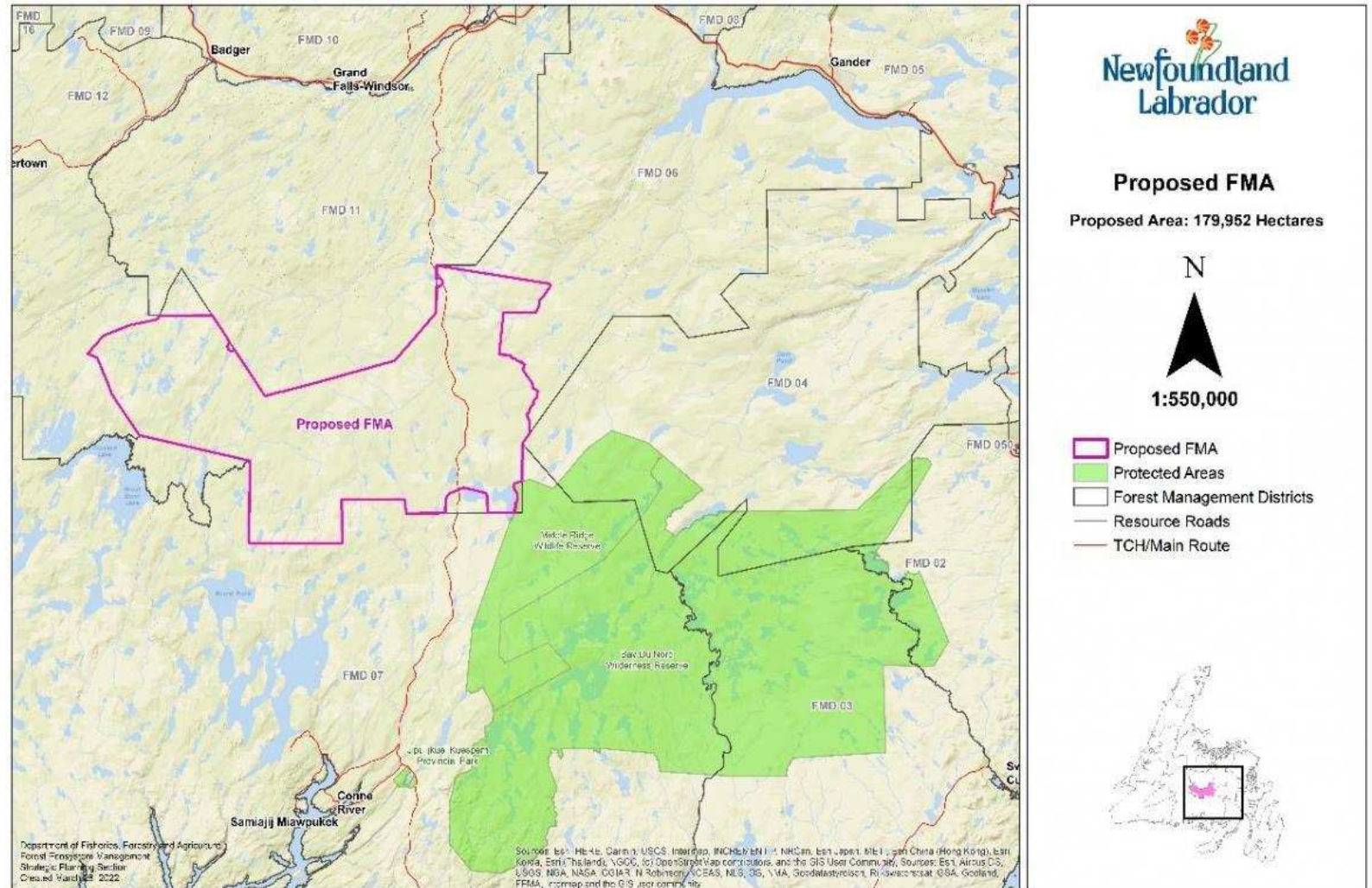


Bridges_Evaluation

- Good
- Fair
- Poor
- Failed
- Unsafe

- Open
- Limited
- ATV
- Not Passable
- T Railway
- Unknown

Forest Management Agreement Miawpukek First Nation



Environmental Management System (EMS)

Activities Under EMS:

- Harvesting
- Road Construction and Maintenance
- Silviculture
- Insect & Disease (control programs)

Date of Original Certification

December 17, 2015

Date of Current Certification

July 25, 2024

Date Certification Expires

July 24, 2027



Public Outreach



Public Outreach



Forests Worth Knowing
Atlantic Teachers' Tour



**Newfoundland
&
Labrador**

THANK YOU

Contact: SeanGreene@gov.nl.ca