



Forest NB 2026 Industry Forum

LANDRICH 

PONSSE

www.ponsse.com





ALPA Equipment Growth, Innovation, and Sustainability

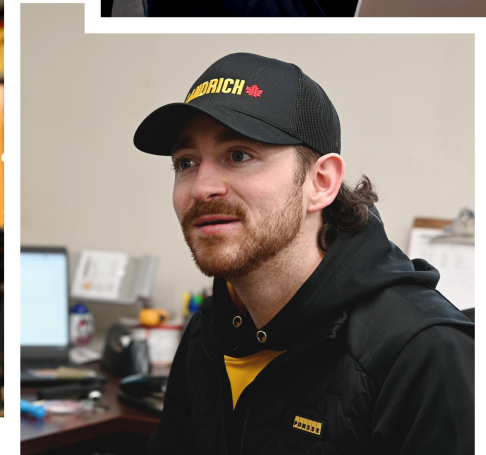
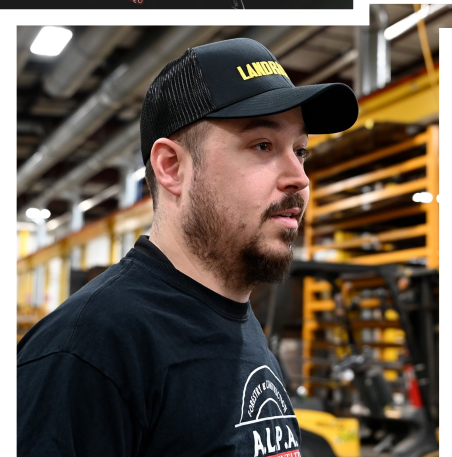
Exploring advancements
in sustainable forest industry tools



Our 50-Year Legacy and Continued Commitment

A family-owned company

Three generations of prosperity



Our 50-Year Legacy and Continued Commitment

Long-Term Industry Presence

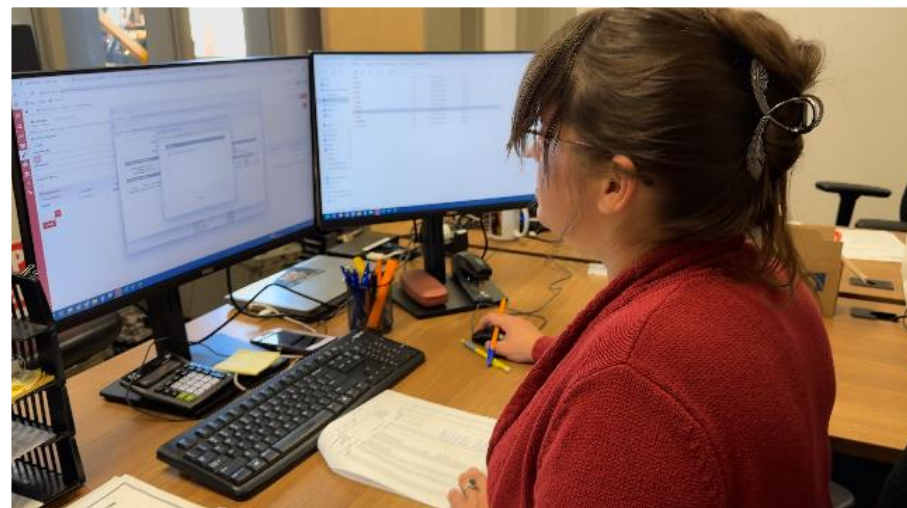
ALPA Equipment has been integral to New Brunswick's forestry and construction sectors for over fifty years, building strong community ties



Our 50-Year Legacy and Continued Commitment

- Client-Focused Service

ALPA is fully dedicated to client needs, delivering tailored solutions that help operators maximize profitability in evolving markets



Our 50-Year Legacy and Continued Commitment



- Strategic Partnerships

Decades of collaboration with provincial agencies and manufacturers enhance access to advanced technologies and sector



Strategic Partnerships Strengthening the Forestry Sector

- Partnerships with Equipment Manufacturers

Long-standing alliances with global leaders PONSSE to ensure access to innovative, durable forestry machinery for local contractors.

Working with many OEM's for product development.



Strategic Partnerships Strengthening the Forestry Sector



- Technology and Operator Focus

Cutting-edge machinery offers precision harvesting, terrain adaptability, and smart data systems for improved productivity.

- Driving Industry Innovation

ALPA's feedback loop with manufacturers influences future equipment designs tailored to



Innovation and Technology Shaping the Industry

Where we contribute today



Recent Innovations Including the Landrich Platform

- Fire Suppressing Unit

A Fire Suppressing Unit designed by the Landrich engineers to improve safety in high-risk forestry environments with rapid-response protection.



Recent Innovations Including the Landrich Platform

- Biomass Transport System

The biomass forwarder enables efficient transport of forest residues, supporting renewable energy and reducing waste



Pre-Commercial Thinning Needs

- Mini-Excavators equipped with Shears, bunchers and mulchers.



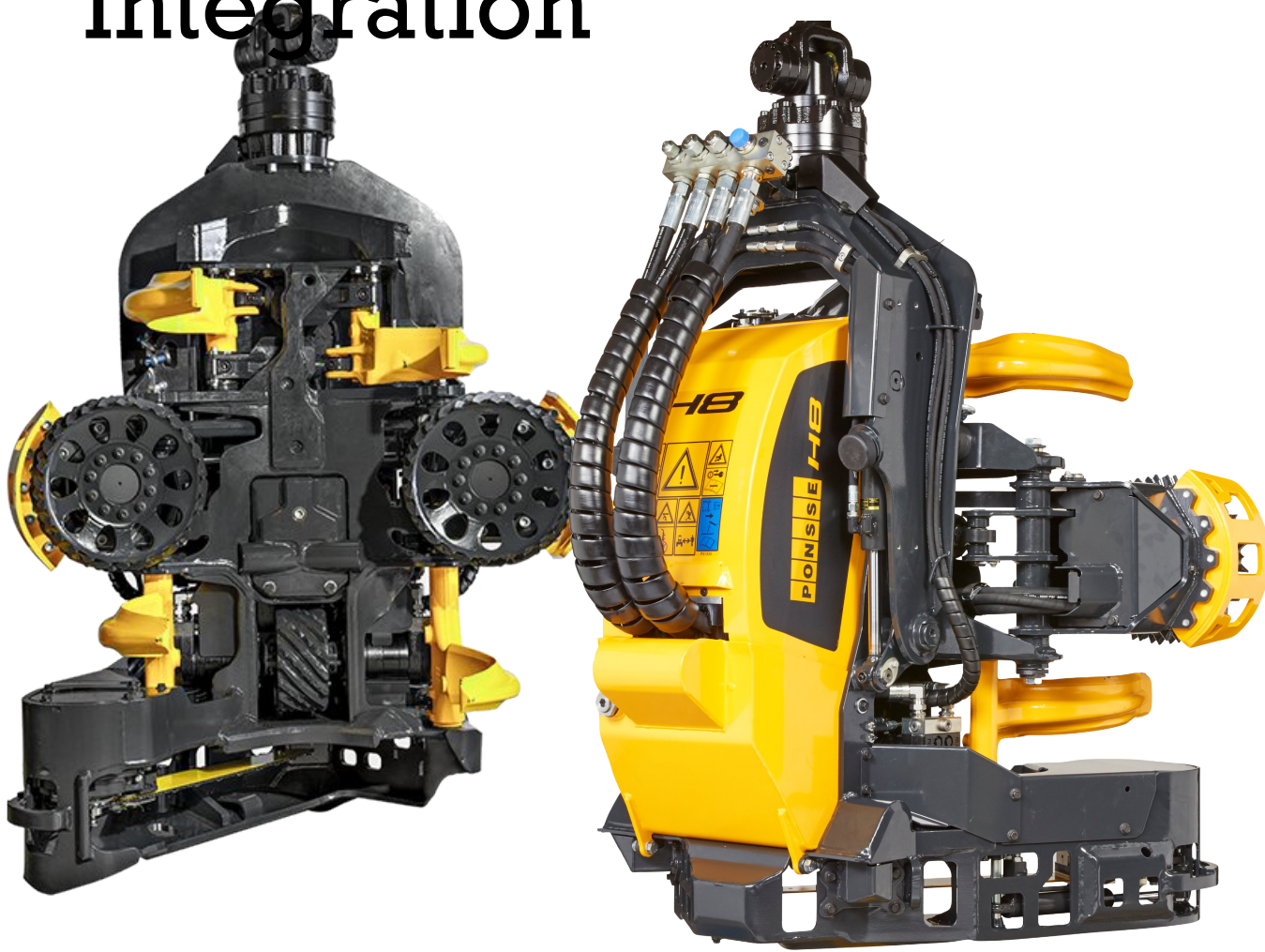
Technological Leadership Through PONSSE Integration

- Enhanced Transmission Engineering

CVT transmissions in Bison and Mammoth models improve performance, reduce wear, and adapt to diverse conditions.



Technological Leadership Through PONSSE Integration



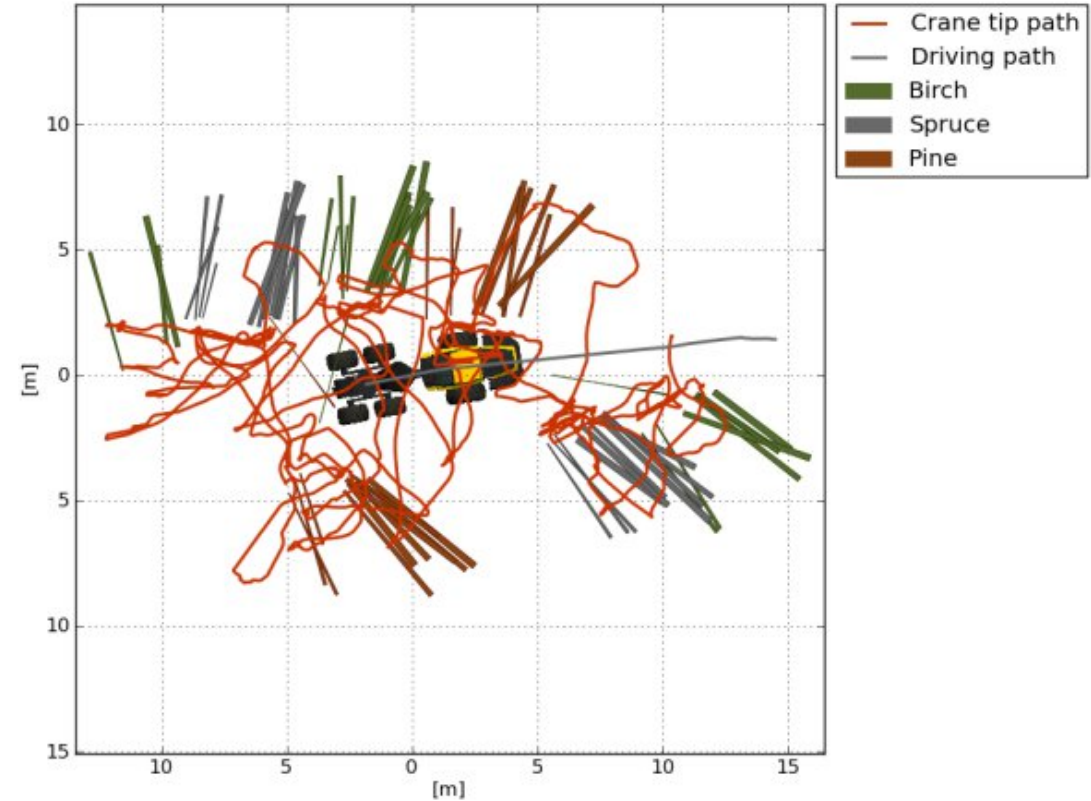
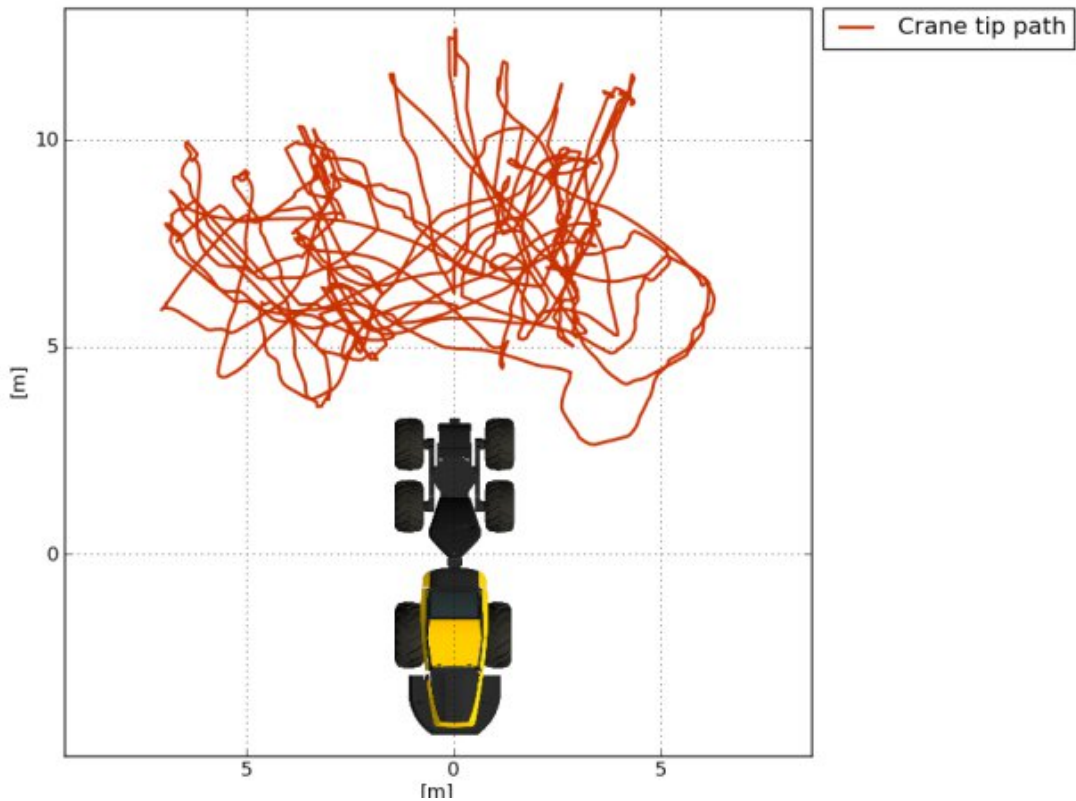
- Precision Harvesting Heads

H7 and H8 harvesting heads adapt to various diameters and species and adjust speed and torque for more adaptive cutting.

Optimize energy consumption and extend component life.

Swiss Army knife of heads

Productivity Leadership: Training



- Improving efficiency with operators on ANY level

Productivity Leadership: Training

A.L.P.A.
EQUIPMENT LTD

**WHERE OPERATORS & MACHINES
GET FOREST-READY.**



PONSSE

**PRODUCTIVITY
ENHANCEMENT PROGRAM**

VIA SECTORS AND SETTINGS PROTOCOL

Start Sharp. Stay Sharp. Work Smarter in the Woods.

Tune It Right. Work It Hard.

Machine Performance

- Feeding the tree represents 50% of harvesting process
- Feeding performance depends on many factor and can drift over time

Example to the right >>>

PONSSE A.L.P.A.

**SPRING
"TUNE-UP"
DU PRINTEMPS**

AVERAGE FEEDING SPEED VITESSE D'ALIMENTATION MOYENNE	
BEFORE / AVANT	AFTER / APRES
5 M/S	7 M/S

FUEL CONSUMPTION PER HOUR CONSOMMATION DE CARBURANT PAR HEURE	
BEFORE / AVANT	AFTER / APRES
13 L/H	11 L/H

FUEL CONSUMPTION PER CUBIC METER CONSOMMATION DE CARBURANT PAR METRE CUBE	
BEFORE / AVANT	AFTER / APRES
1.5 M ³	0.8 M ³

**BOOST
PRODUCTIVITY
REDUCE FUEL
CONSUMPTION**

Train Smart. Harvest Smarter.

**+31%
Productivity**

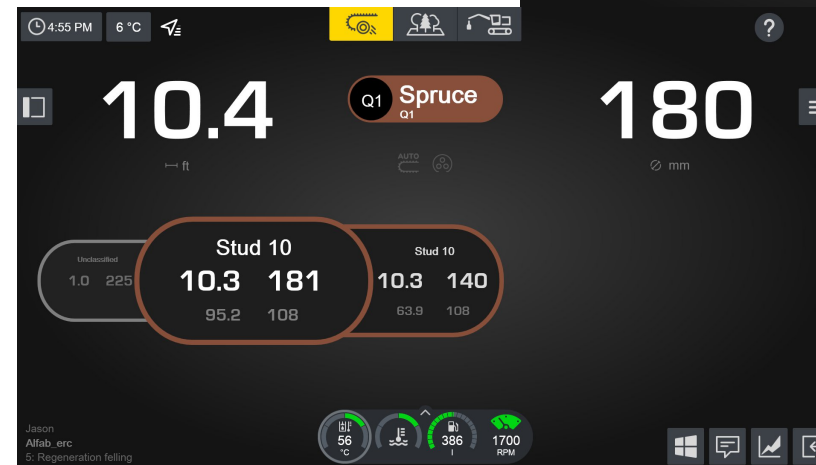
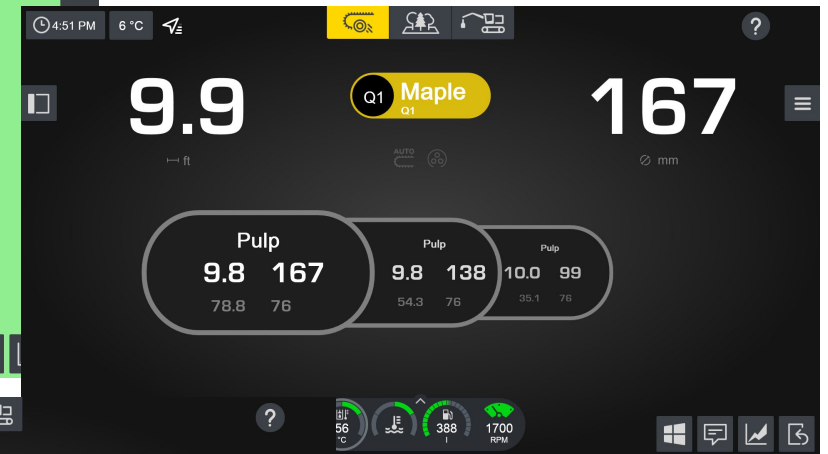


Opti 5G System and Machine-to-Machine Connectivity

- Advanced Operating System

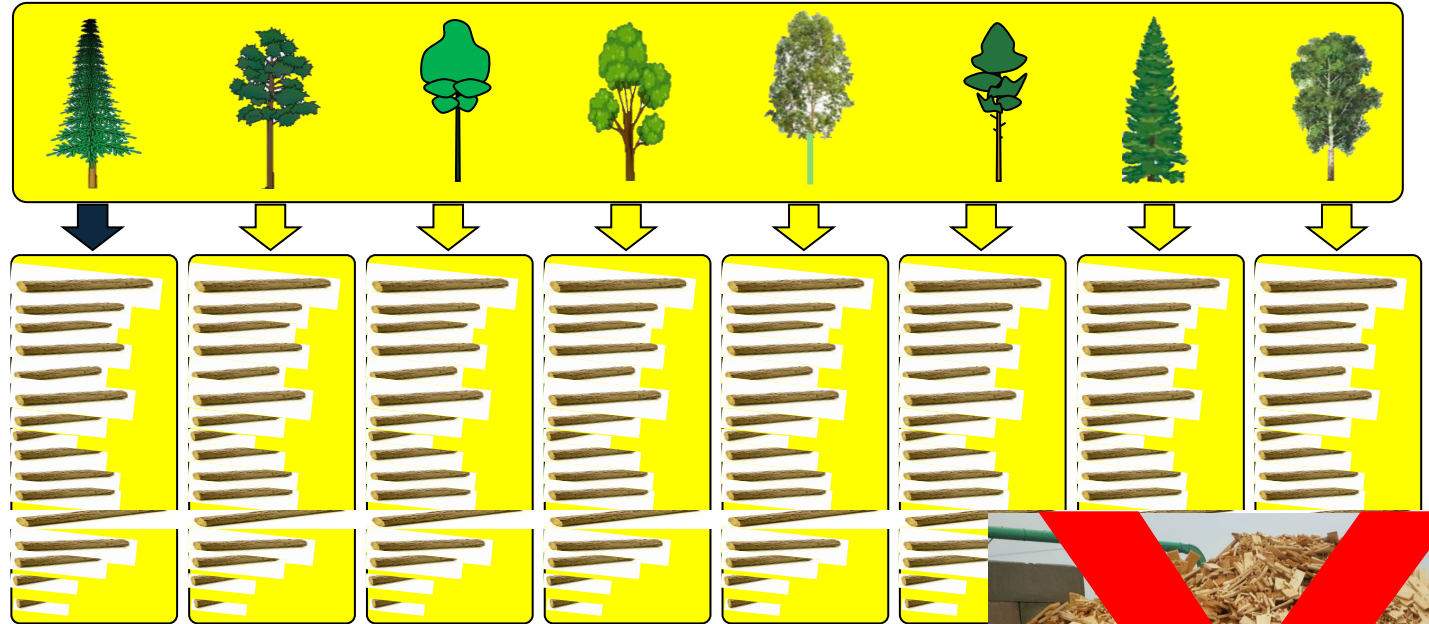
Intuitive graphics based system that controls machine's functions and settings: User-Friendlyness.

Cellular and satellite based data communication



Productivity Optimization

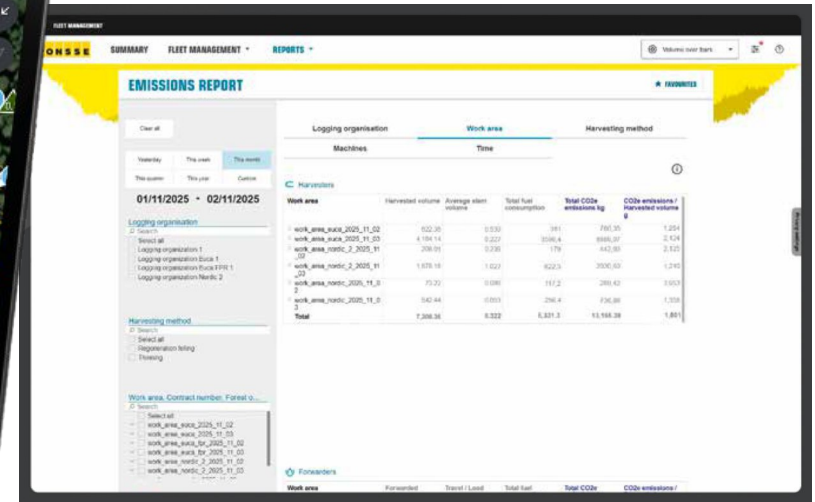
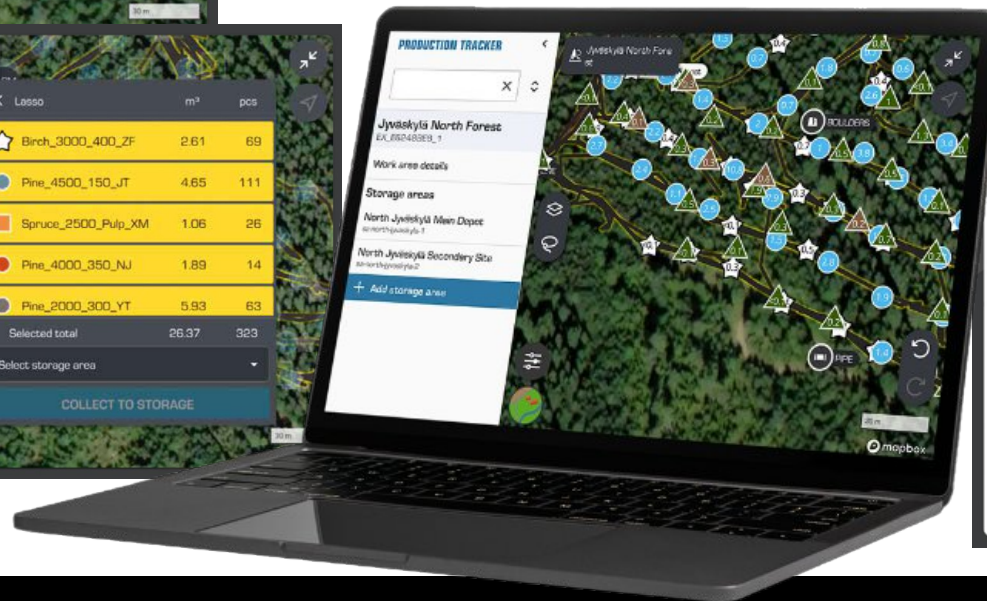
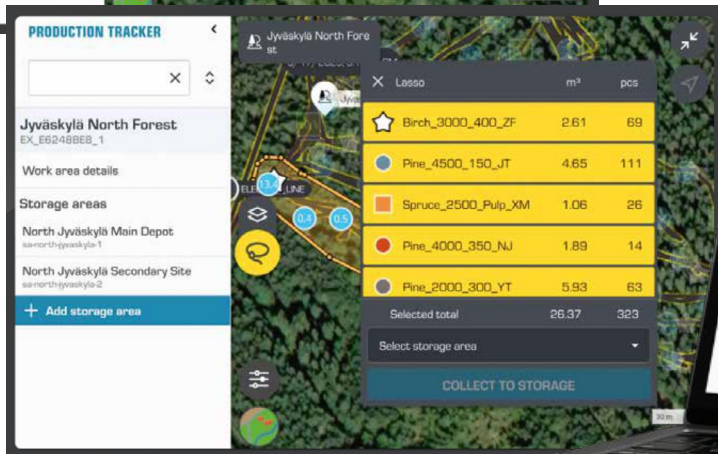
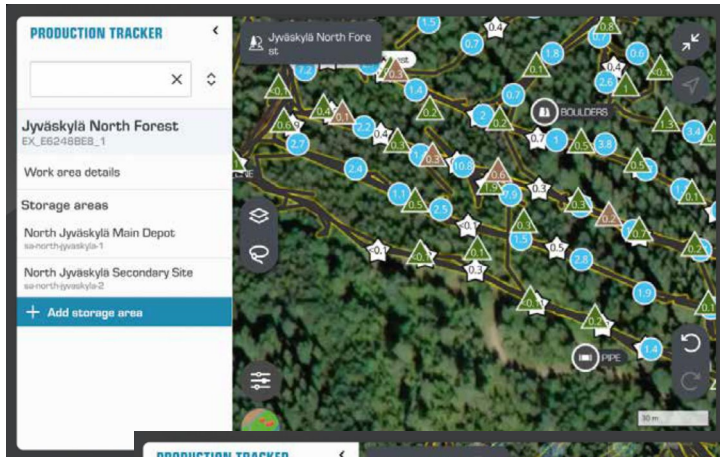
- Increase
 - m^3/stem
 - Sawable material
 - Revenue
- Lower
 - Cost/m^3
 - Waste
- Extremely accurate measurement allowing trim allowance of 3" or less



Technological Leadership Through PONSSE Integration

- Advanced Connectivity Solutions

Manager Pro system with Starlink ensures real-time **data flow** and seamless connectivity in remote forestry sites.



Technological Leadership Through PONSSE Integration

- Felling Assist

The system follows the feeding with up-and-down movements for automated crane control.

Pre-tensioning ensures controlled felling direction.

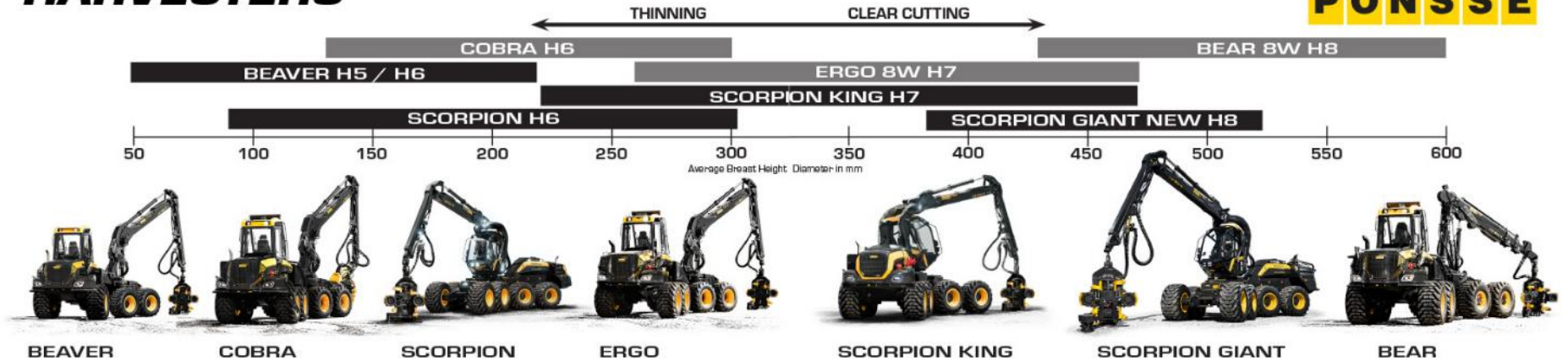


TECHNOLOGY

gical
Leadersh
ip
Through
PONSSE

Integrati
Ponsse models
like Beaver and
Buffalo provide
customized
forestry solutions
matching
production and
stand conditions.

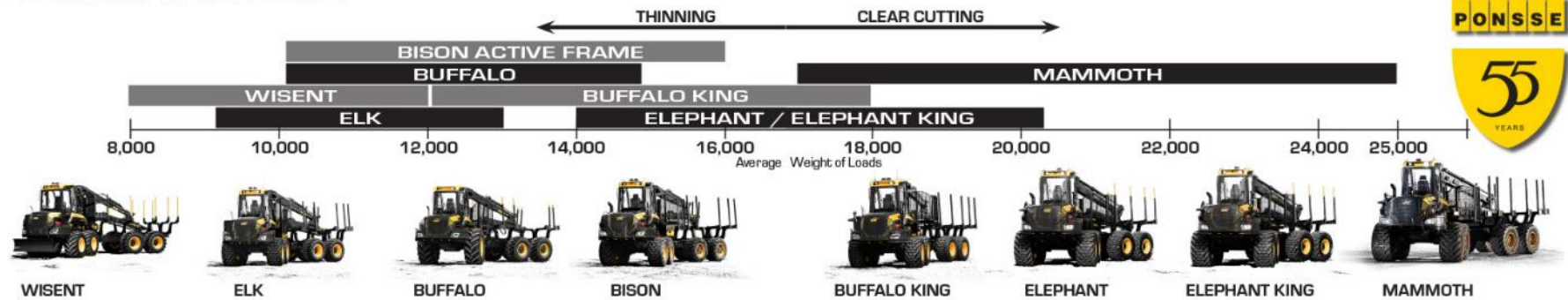
HARVESTERS



HARVESTER HEADS



FORWARDERS





Investments and the Future of Sustainable Forestry

Landrich

Recent Innovations Including the Landrich Platform

- Landrich Platform Evolution

The Landrich is a purpose-built track harvester developed with operator input to meet Canadian forestry demands.

BEST-IN-CLASS: Fuel efficiency, productivity and reliability

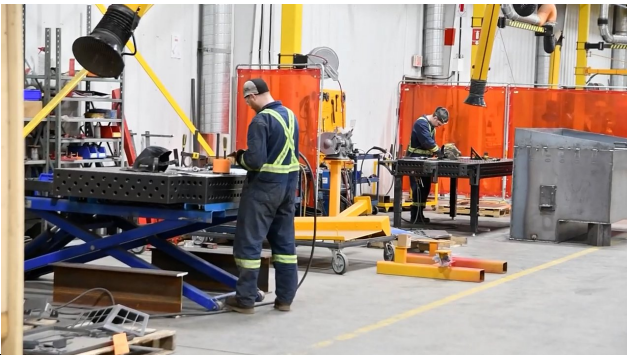


Build right here in New Brunswick

Major Innovation Investments with Landrich



- Landrich Plant Upgrade
The \$10 million upgrade enhanced fabrication technologies and boosted production capacity at the Landrich plant to meet increasing demand.



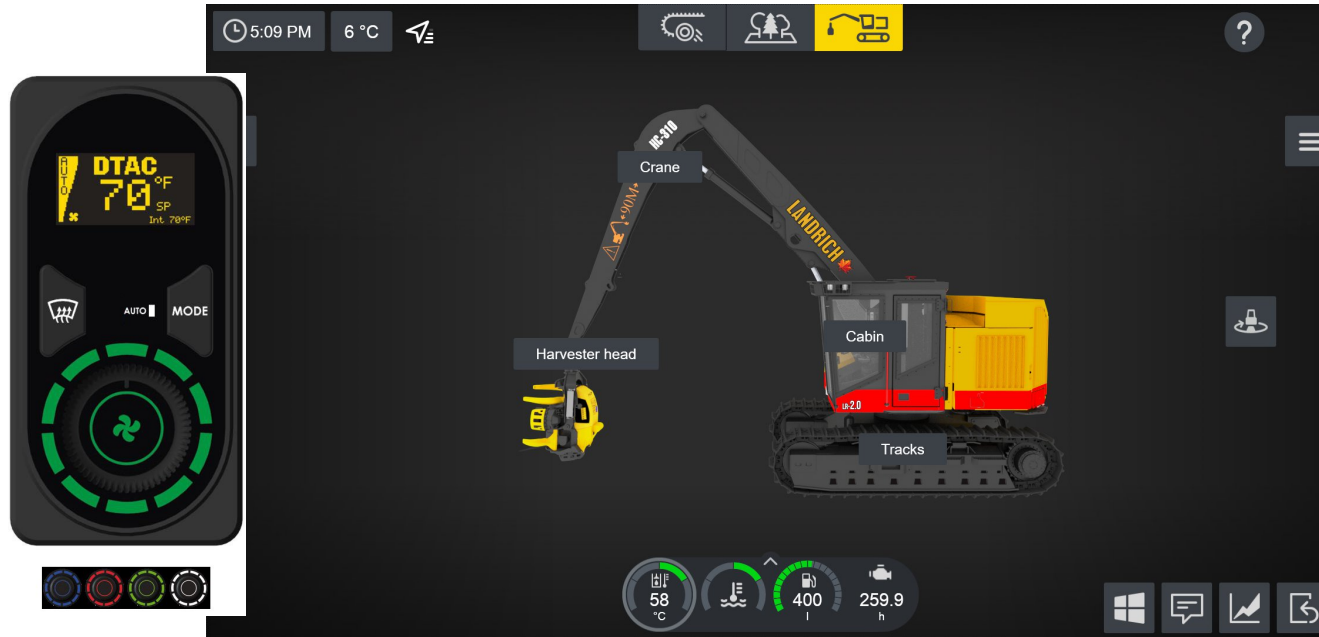
Major Innovation Investments with Landrich



- Collaboration with Global Engineering

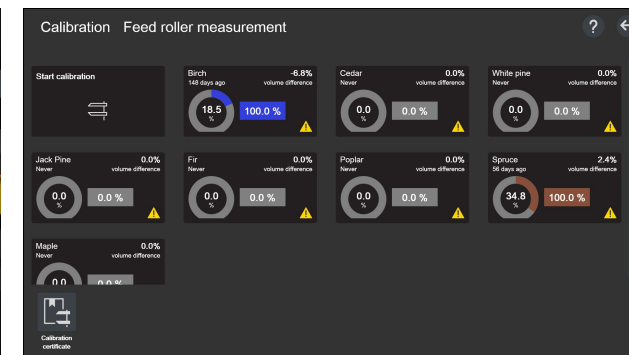
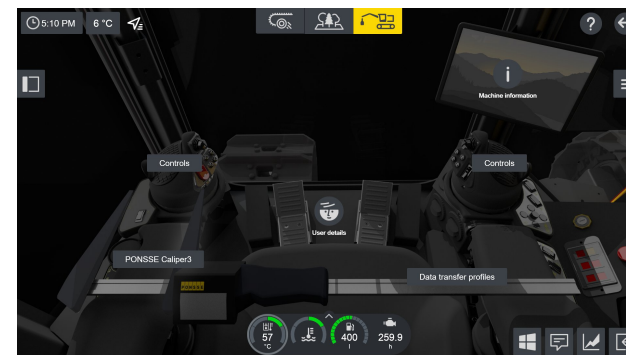
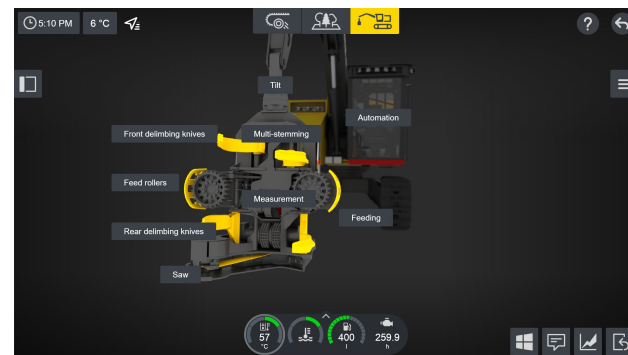
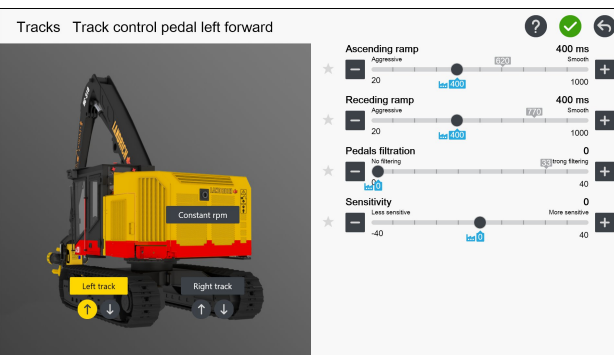
Partnership with Ponsse integrates local expertise with global engineering for durable and sustainable machines.

Digital Integration with Opti 5G and Machine-to-Machine Connectivity



- Opti 5G System Features

Opti 5G offers intuitive graphics and enhanced data processing for better machine-to-machine communication in forestry equipment.





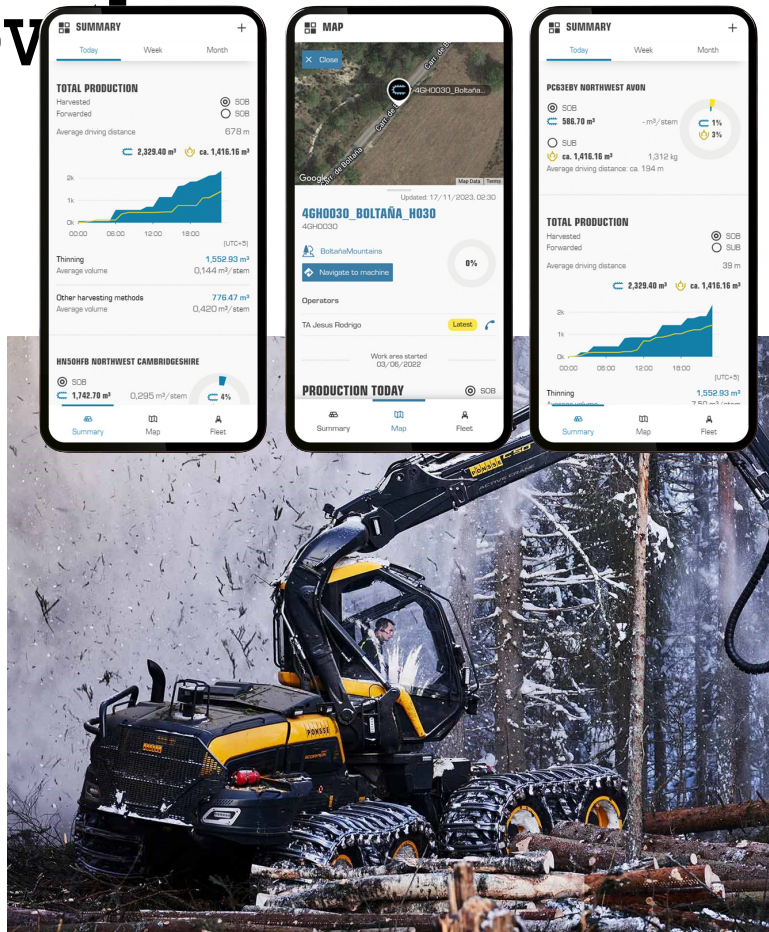
Looking Forward: AI, Performance, and Industry Growth



ALPA's Outlook: AI, Advanced Machine Performance, and Sustainable Growth

- AI-Driven Machine Performance

ALPA leverages AI to enhance machine automation, predictive maintenance, harvesting accuracy for improved forestry operations and





Conclusions



ALPA Is Your Forestry Partner

- Committed to be part of the solution for your recruitment and retention challenges.
 - Comfort and safety in our equipment
 - We have training programs & partnerships with schools and colleges
 - Partnerships with the industry

ALPA Is Your Forestry Partner

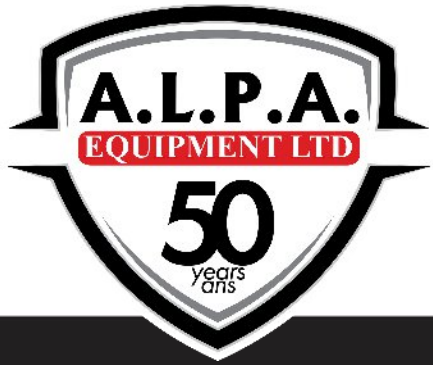
Leading the industry in:

- Productivity and profitability
- Monitoring and management tools
- Fibre optimization

Partnership with our clients and industry
Your Success Is Our Success

***Your Local Partner
Since 1976***

Thank you



LANDRICH 

PONSSE

www.ponsse.com



www.alpaequipment.com

BALMORAL, NB

(506) 826-2717

24/7 Parts: (506) 685-001

FREDERICTON, NB

(506) 452-9818

24/7 parts: (506) 461-0480

EDMUNDSTON, NB

(506) 735-4144

24/7 parts: (506) 740-0363

TRURO, NS

(902) 897-2717

24/7 parts: (902) 897-2717

MONCTON, NB

(506) 861-2572

24/7 parts: (506) 872-2572