



Natural Resources
Canada

Ressources naturelles
Canada

Collaboration for Impact: The Role of Federal Research Forests in Forest Innovation

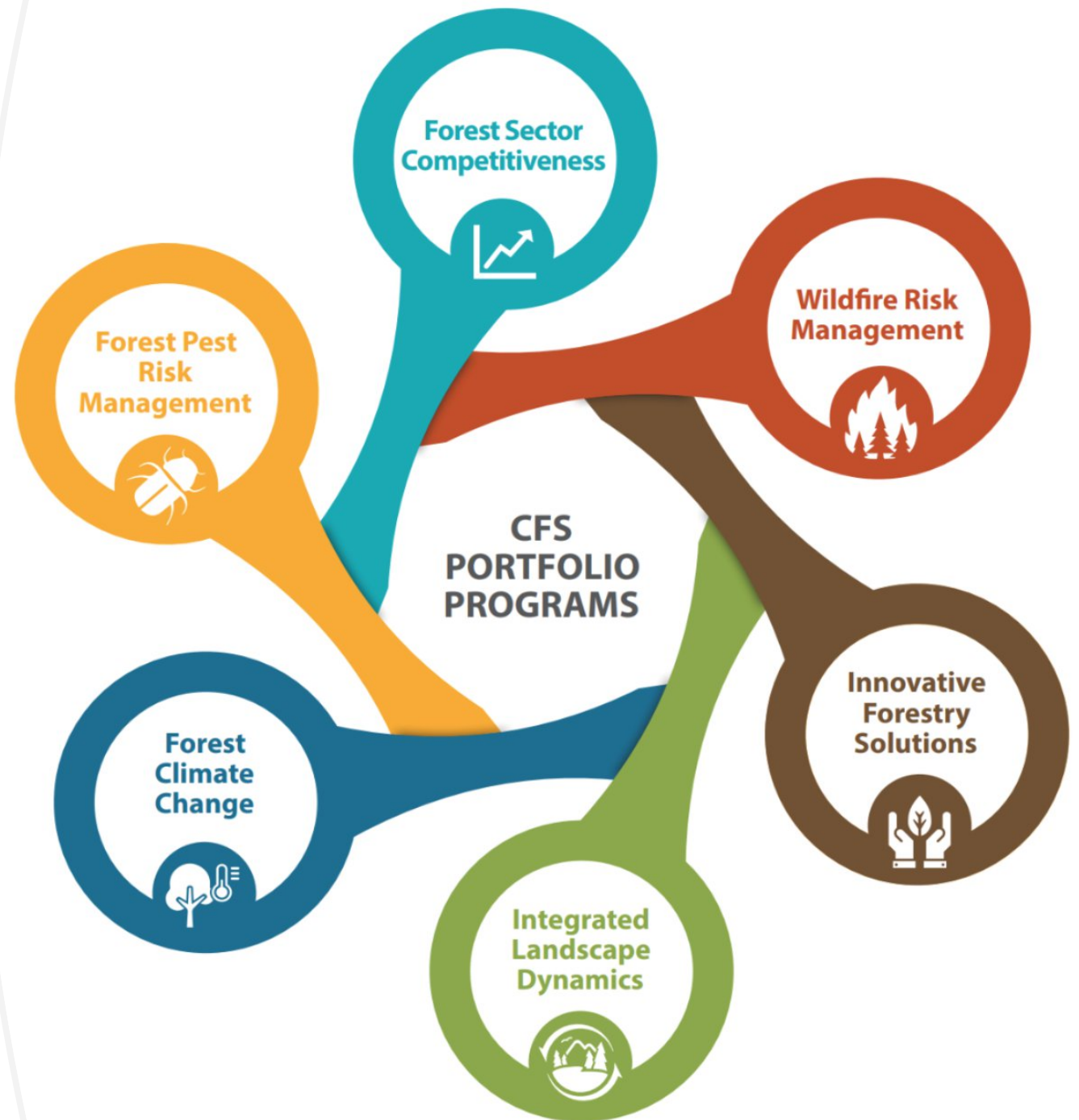
Adam Dick, Director of Collaborative Research
Canadian Forest Service, Atlantic Forestry Centre

Canada



Canadian Forest Service

- Drive innovation
- Deliver high impact research
- Ensuring Canada's forest sector stays resilient, competitive, and sustainable



Acadia Research Forest

- Established 1993
- Military training area and forest experimentation

1967 24 GEORGE V., 1934 C. 16

York and Sunbury Military Training Area, Etc.

CHAPTER XVI.

An Act To Enable the Establishment of a Military Training Area and a Forest Experimental Station

- Sec.
- | | |
|--|---|
| 1. "Minister" defined. | 4. Proviso for return of lands to Province if not used. |
| 2. Certain powers conferred on Minister. | 5. Expenditures caused by this Act, how to be provided for. |
| 3. Grant of necessary lands to Crown in right of the Dominion, authorized. | Schedule containing description, metes and bounds of lands to be granted. |
- Passed 27th March, 1934.

Whereas the Governments of the Dominion and this Province, for the purpose of providing employment for the unemployed whenever employment is necessary, have approved a plan for the establishment and maintenance in this Province of a military training area and a forest experimental station by the Department of National Defence and the Department of the Interior (Forest Service Branch) of the Dominion Government;

And Whereas an area not greater than seventy-eight square miles, in the Parishes of Mauderville and Sheffield, in the County of Sunbury, and in the Parish of St. Mary's, in the County of York, has been selected by the Minister of Lands and Mines, out of which such military training area and forest experimental station may be established, and a description by metes and bounds of such area is set out as a schedule to this Act;

And Whereas part of this area is Crown Land and part is privately owned land, and it has not yet been definitely determined how much of the Crown Land or privately owned land will be needed for the purposes herein set out;

And Whereas it will be necessary to extinguish, within



Acadian Forest Research Station
Preparing nursery beds.



Acadia Forest Experiment Station
Students caliper and tallying material in the softwood stand in connection with sample plot work.

Role of CFS's Federal Research Forests

- Support forest sector
- Advance forest science
- Drive forest innovation
- Sector transformation



Acadia Research Forest

- > 9,000 ha
- Model of the Acadian Forest stand type
- Primarily softwood and mixedwood
- Research focused
- LiDAR data
- Working forest
 - mimic modern forest conditions





Long-term Research Investments

- 1979 Black spruce provenance trial (E60)
- Seeds sourced from Alaska to Newfoundland
- Resource for climate change questions
- Seed sources archived safely in our National Tree Seed Centre

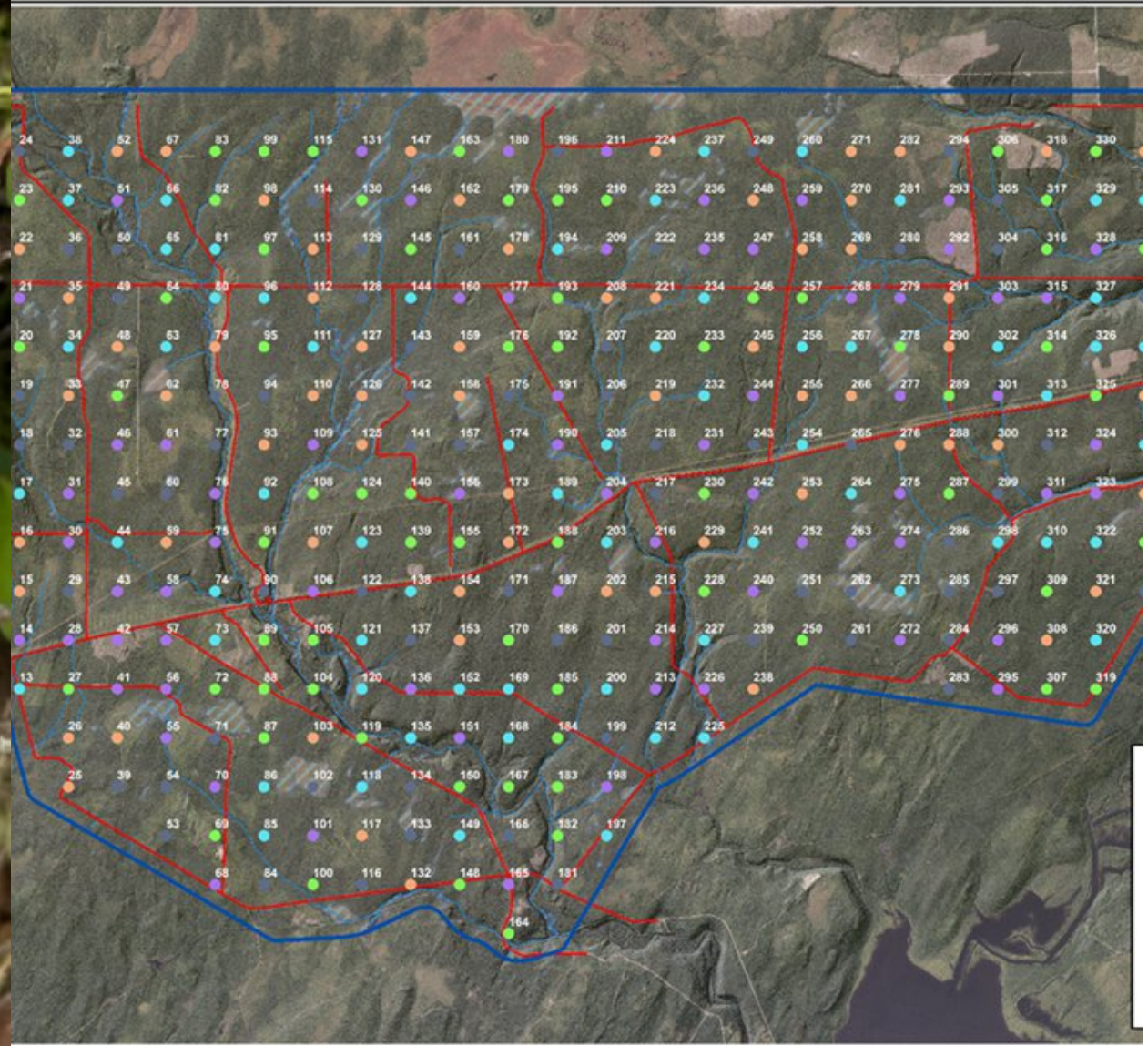
Long-term Research Investments

- Hybridizing climate resilient species
- Experimenting with Sitka and White spruce
- Produce fast growing frost tolerant softwood
- Researchers optimistic somatic embryogenesis is a viable option





Acadia Research Forest CLI Program



Acadia Datasets

Advancing Data Collection

- Improving measurement technology and techniques
- Committed to piloting new technologies
- Continually validating methods of data collection



BETA Build 7ce3424 [About Antenna](#) [Terms of service](#) [Code of conduct](#)

PROJECT JOBS CAPTURES STATIONS **SESSIONS** OCCURRENCES TAXA

700,494 6 334 20,317 770

CAPTURE #528672

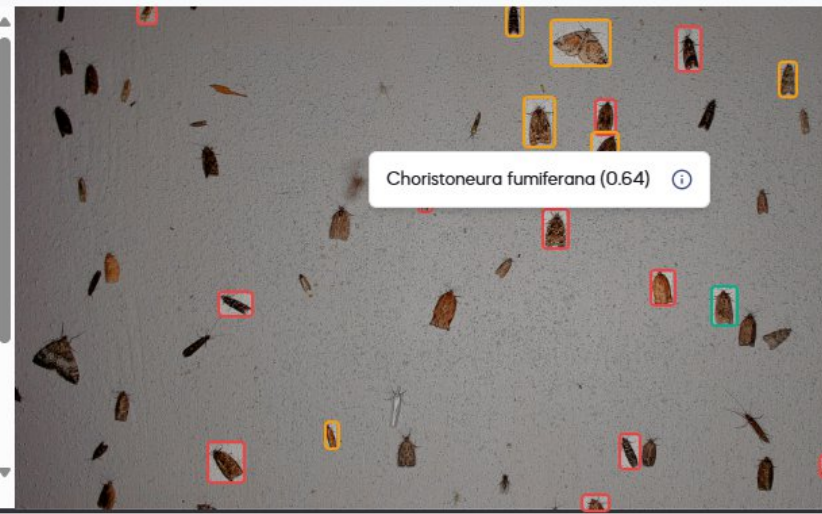
TIMESTAMP: Jul 19, 2022 01:32:00 a.m. SIZE: 2.0 MB

PROCESS: Quebec & Vermont moths

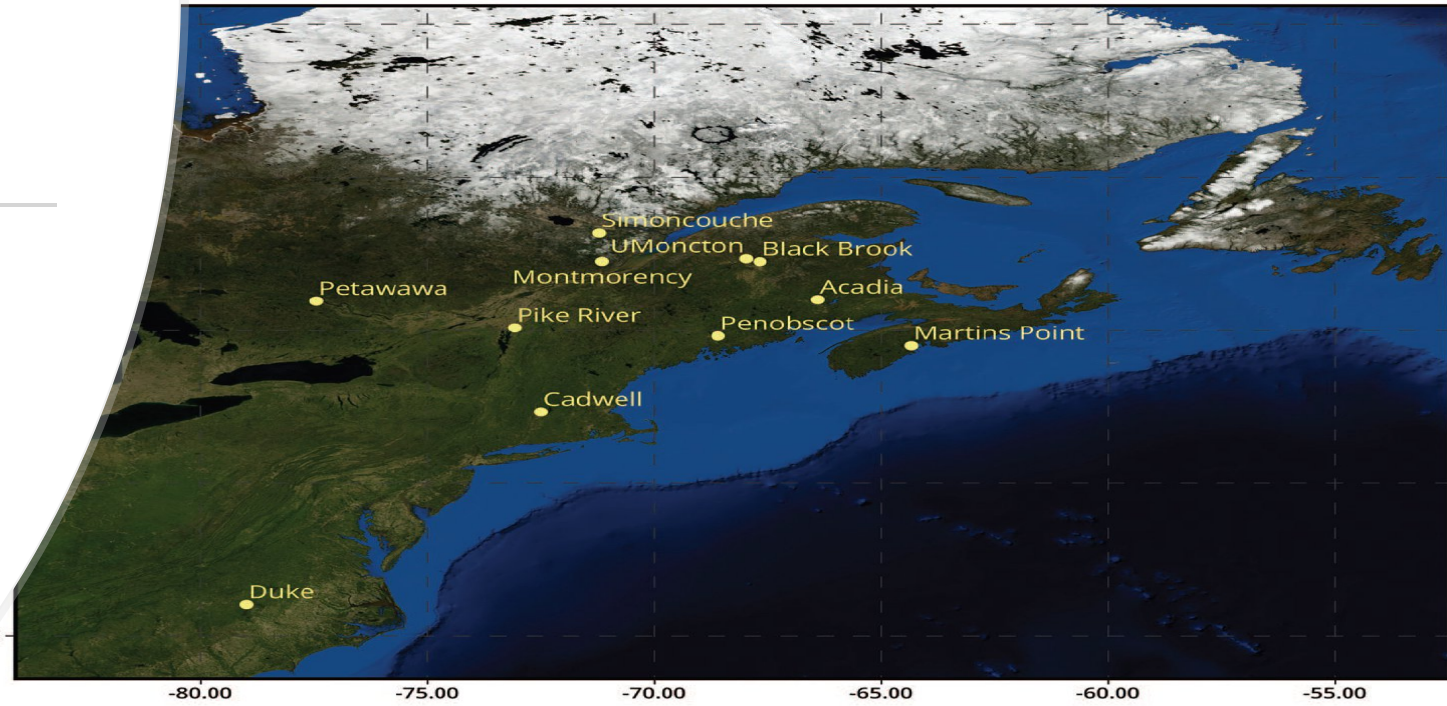
LATEST JOB STATUS: Success

JOB	OCCURRENCES	TAXA
1	20	13

VIEW SETTINGS



Acadia's Research Partners



A photograph showing several researchers in an outdoor laboratory setting. They are working with large black plastic tubs arranged in a row on a gravel surface. One researcher in the foreground is kneeling and working with a tray of soil or organic matter. Other researchers are visible in the background, some using tools and equipment. The area is surrounded by green vegetation and a fence.

Acadia Research: Highlight

Forest Aquatic Mesocosm Array

- CFS research scientist Dr. Chris Edge
- Unique outdoor laboratory
- Supports questions surrounding forest management decisions
- Infrastructure could be harnessed for other research on aquatic ecosystems

Acadia Research Highlight

Ecological Monitoring Tower

- Led by UNB
- Constructed in 2013
- Measures multiple parameters
- Hub of collaboration






Maritime College of Forest Technology
 Feb 6 • 🌍

Out in the field at Ripples and the Acadia Research Forest! 🌲 Our 2nd year students had the opportunity to see different harvesting operations in action on both private and federal land. A big thank you to the folks from AV Nackawic for demonstrating real-world techniques and sharing their expertise.

[#MCFT](#) [#foresttechnician](#)




Training Grounds for the Next Generation



Conclusion

- Acadia's value amplified under fiscal constraints
- Reduces cost and complexity for research and field operations
- Decades of datasets create new opportunities for discovery
- Invitation to collaborate:

arf-fea@nrca-nrcan.gc.ca